

Formulation and Evaluation of Moisturising Herbal Cold Cream

**Belhekar Archana B¹, Bodake Ravina S², Bochare Vaishnavi K³,
Vidhate Prajwal G⁴, Kumbhar Subhash T⁵**

Samarth Institute of Pharmacy, Belhe, Maharashtra, India¹²³⁴

Department of Pharmacology, Samarth Institute of Pharmacy, Belhe, Maharashtra, India⁵
belhekararchana2018@gmail.com

Abstract: *Herbal cosmetics are the preparations are used to beautify and enhance the human appearances. The aim of the present research was to formulate and evaluate the herbal cold containing plant extracts prepared by using water in oil method for the purpose of nourishing and moistening the skin. The cold cream is prepared by using the neem oil and almond oil. Quality evaluation of the formulated product was assessed by using different evaluation methods. No change of the physical properties was observed in formulated cream. The formulated cream showed good consistency and spread ability, homogeneity, pH, no evidence of phase separation during study period of research. Stability parameters like visual appearance, nature, viscosity and fragrance of the formulated cream showed that there was no significant variation during the study period of research. The herbal extract containing cold cream gives the cooling and soothing effect due to slow evaporation of water present in the emulsion. The cold creams are more moisturizing as they provide an oily barrier which reduces the water loss from the stratum corneum, the outermost layer of the skin. They are water-in-oil emulsion and intended for application on skin or accessible mucous membrane to provide localized and sometimes systemic effect at the site of application.*

Keywords: Cold Cream, Cosmetics, Herbal, Formulation, Evaluation.

I. INTRODUCTION

Cosmetics are the products which are generally used to beautify the skin and also to purify the skin . The cosmetics are the word derived from Greek word – ‘kosmesticos’ which means to adorn. Cold cream is the water in oil emulsion . Cold cream gives the prolonged contact time in the site of application as compared to the other semisolid dosage form or formulation. They give elegance to the skin and it is not that much greasy. Due to the oil phase, it gives an emollience to the skin. The function of the cold cream is for restoring moisture to dry skin, it allows to eliminate the waste materials from the pores and also cools the body . It is easily watered washable and easy to wash away. They are non-irritating when applied on the skin. The water phase gives extra conservation to the skin. It gets liquefy at body temperature. It gets penetrated via the epidermis of the skin via the natural pores. More recently anti-aging creams have been manufactured which can retain younger looking skin for many years. The best cleansing agents are cleansing creams, soap and water.

Cream is defined as semisolid emulsions which are oil in water (o/w) or water in oil (w/o) type and these semisolid emulsions are intended for external application. Cream is classified as oil in water and water in oil emulsion. It is applied on outer part or superficial part of the skin and its main ability is to remain for a longer period of time at the site of application. The function of a skin cream is to protect the skin against different environmental condition, weather and gives soothing effect to the skin. There are different types of creams like cleansing, cold, foundation, vanishing, night, massage, hand and body creams. The main aim of our work is to develop a herbal cream which can give multipurpose effect, like moisturizer, reduce acne and skin irritation, reduce skin diseases like eczema, psoriasis, dry skin, wrinkles, rashes etc. and also adding glow to the face. We have used two herbal ingredients in our preparation which are Neem, Almond. Aloe Vera gel is used as a moisturizer, to reduce pimples and acne and also used for treatment of burn wounds. Neem is used as an antifungal and anti-inflammatory and it is also used to reduce scar, pigmentation, redness and itching of the skin. From that time the materials which are used to promoting appearances or to beautify the skin are

called as cosmetics. From ancient time till now people are still using polyherbal or herbal cosmetics for the beautification of skin.

Cold cream is the water in oil emulsion. Cold cream gives the prolonged contact time in the site of application as compared to the other semisolid dosage form or formulation. They give elegance to the skin and it is not that much greasy. Due to the oil phase, it gives an emollience to the skin. The function of the cold cream is for restoring moisture to dry skin, it allows to eliminate the waste materials from the pores and also cools the body. It is easily watered washable and easy to wash away. They are non-irritating when applied on the skin. The water phase gives extra conservation to the skin. It gets liquefy at body temperature. It gets penetrated via the epidermis of the skin via the natural pores.

II. HUMAN SKIN

The skin is the body's largest organ. It covers the entire body. It serves as a protective shield against heat, light, injury, and infection. The skin also:

- Regulates body temperature
- Stores water and fat
- Is a sensory organ
- Prevents water loss
- Prevents entry of bacteria
- Acts as a barrier between the organism and its environment
- Helps to make vitamin D when exposed to the sun

THE LAYERS OF HUMAN SKIN

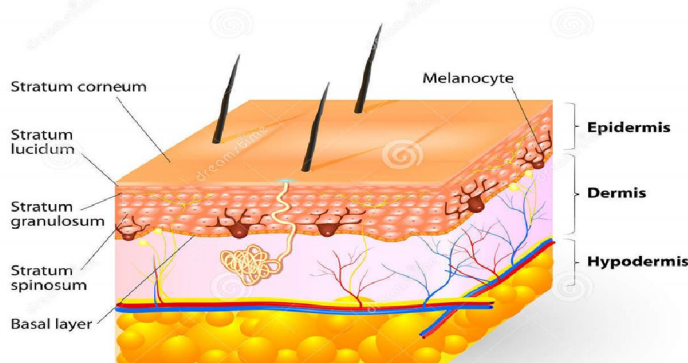


Fig 1: The Layers of Human Skin

Advantages of Herbal Cold Cream

1. It Prevents ageing and dehydration of skin.
2. As cold creams contain enough amount of water and oil, they keep skin safe from the rough environments.
3. They also keep skin moisturized and safe from damages.
4. Cold creams are designed to remove makeup and smooth the skin.
5. Medicated cold cream is mainly used as topical pharmaceutical dosage form for the treatment of skin.
6. To help in the maintenance of moisture balance of skin and avoid rough skin conditions. It is one of the basic uses of cold cream (non-medicated).
7. As cleansing preparation to remove make-up.
8. To provide an emollient effect and oily protective layer on the skin
9. Also, provide a chemical barrier as with sunblock ingredients.
10. As a carrier for drug substances such as diflucortolone valerate in medicated cream.

Ideal Properties of Herbal Cold Cream

1. It should not normally be diluted.
2. The pH of the cold cream must be optimum from 4.6–6.0
3. Its consistency should be optimum so that it can be easily put out from the container and apply easily.
4. Should give a cooling effect on the skin after external application.
5. It must provide a thin waxy protective layer on the skin to protect the water evaporation from the skin surface.
6. Should give a faster emollient effect, so that very dry skin can swell up and become soft within a short time.
7. Less greasy than ointment and Easily spread on the skin..
8. It should be physically and chemically stable throughout its shelf-life.
9. The excipients should be compatible with each other. It should be sterile

III. AIM AND OBJECTIVE

3.1 Aim

To Formulation and Evaluation of Moisturizing Herbal Cold Cream.

3.2 Objectives

1. To evaluate safety, efficacy and quality of Herbal cold cream.
2. They are non-irritant when applied on the skin.
3. To explore the many aspects of the rich traditional Indian herbal medicine.
4. To apply knowledge gained during the course in evaluating the usefulness of herbal formulas.
5. To formulate and evaluate a cosmetic herbal cold cream for glowing skin by using natural herbal ingredients.
6. To synthesize a cold cream ideal for all skin types.
7. To find the useful benefits of cold cream on human use as cosmetic product

IV. MATERIALS AND METHODS

4.1 Ingredients of Formulations

All the natural materials used in the present study i.e., Almond oil, Neem oil from local market, in a form of dried powder. The details of the plant material used for the formulation of cold cream are mentioned below

1. Almond oil
2. Neem oil
3. Borax
4. Beewax
5. Rose water

A. Almond Oil

It's also anti-inflammatory and boosts immunity. Containing omega-3 fatty acids, almond oil might help you maintain healthy cholesterol levels and improve your memory. It may help lower your risk for diseases like cancer and heart disease.



Fig 2: Almond Oil



B. Neem Oil (Azadirachtaindica)

Neem oil is a naturally occurring pesticide found in seeds from the neem tree. Neem oil is a mixture of components. Azadirachtin is the most active component for repelling and killing pests and can be extracted from neem oil. The portion left over is called clarified hydrophobic neem oil



Fig 3: Neem Oil

C. Borax

Borax, combined with wax, is used in many cosmetic products like creams, gels, and lotions. It is famously used in hand soaps to help wash off the oil or grease from the hands. Borax's alkaline nature makes it a perfect ingredient in cleansers and toners. In cosmetic products, borax is sometimes used as an emulsifier, buffering agent, or preservative for moisturizing products, creams, shampoos, gels, lotions, bath bombs, scrubs, and bath salts. Borax is also an ingredient combined with glue and water to make “slime,” a gooey material that many kids enjoy playing with. Right from creams and body lotions to shampoos, bath gels and even the in-vogue bath bombs, just about every product associated with skincare has Borax as one of its components. Given its mild and antiseptic nature, quite a few natural cosmetic products tend to include Borax as an essential ingredient as well.



Fig 4: Borax

D. Beewax

Ability to Protect from Irritants-Beeswax can also act as a layer of protection when applied to the skin. It can protect skin from environmental irritants and extreme weather. Promotion of Hair Growth-Beeswax not only moisturizes and soothes hair, but it can keep moisture from getting out of the hair. Beeswax can create a protective layer on the skin. It's also a humectant, which means that it attracts water. Both of these qualities can help the skin stay hydrated. Beeswax is also a natural exfoliator, ideal for sloughing away dead skin cell. Beeswax heals and softens skin, and is an antibacterial agent. It can help you fight conditions like acne, dry skin, eczema, and stretch marks. Our raw beeswax can help you create your own skin care moisturizers and lotions specially formulated just for you.



Fig 5: Beewax

E. Rose Water

Rose water is especially hydrating when combined with other moisturizing ingredients, such as ceramides or glycerin. “These help to moisturize the skin, protect the skin barrier and prevent further water loss from the skin,” says Allawh. However, it shouldn't replace your current moisturizer. Rose water has been used as a beauty product for thousands of years, so it's no surprise that it can improve your complexion and reduce skin redness. The antibacterial properties may help reduce acne. The anti-inflammatory properties can reduce skin redness and puffiness. Rose Water Maintains the Skin's Natural pH Balance. Chemically produced soaps and cleansers disrupt the pH balance of our skin, making it prone to bacteria that cause various skin conditions like rashes and acne. This property helps rose water restore the skin to its normal pH level



Fig 6: Rose Water

4.2 Method of Preparation

- Take required quantity of Beeswax and Liquid paraffin in porcelain dish.
- Heat this mixture in water bath for melting purpose. Remove dish from water bath.
- Take Borax and distilled water in beaker. Heat this solution in water bath for about 75⁰C.
- This Borax solution added dropwise in porcelain dish with continuous stirring. Add Methyl paraben in porcelain dish dissolved it.
- Add Neem oil and Almond oil in this solution. Add perfume for fragrance.
- Herbal Cold Cream was obtained

Table 1: Composition of Herbal cold cream

| Sr No. | Name of Ingredient | Scientific name | Quality (for 100gm) | Uses |
|--------|--------------------|-------------------------------|---------------------|---|
| 1 | Methyl Paraben | methyl p-hydroxybenzoic acid | 0.010 gm | Antibacterial properties and Preservation |
| 2 | Borax | sodium tetraboratedecahydrate | 0.25 gm | Stability maintain |



| | | | | |
|---|-----------------|---|-------|---|
| 3 | Beeswax | Apiccerana, Apis Mel, Apismellifera, ApisMellif | 15 gm | emulsifying agent, stabilizer |
| 4 | Liquid Paraffin | petrolatum | 50 gm | Prevents skin itching and lubricating agent |
| 5 | Neem Oil | Azadirachta indica | 23 gm | Prevent or even kill fungus |
| 6 | Almond oil | Prunusdulcis var. dulcis. | 25 gm | protective layer skin |
| 7 | Perfume | eau de parfum | 13 gm | Fragrance |

4.3 Application of Herbal Cold Cream to skin-

Despite their intended design as facial moisturizers, cold creams are actually very versatile and can be used in a number of different ways. First, one of its most popular uses is as a makeup remover. The thick oils are able to gently melt makeup and dirt away, allowing it to be removed with minimal damage, rubbing or scrubbing. Similarly, some find it effective as a primer for cosmetic foundations as it smooths the skin and allows makeup to be applied more evenly across the face. Since it removes makeup without water, Kelly says it even is a great product to take camping or on road trips where you may be away from your bathroom sink or shower!

Lastly, cold creams can also be effective as a lip balm, body lotion, or even a shaving cream. Using a cold cream on your lips helps lock in vital moisture and provide hydration throughout the day to the sensitive skin on the lips. Likewise, applying a moisturizing cold cream to your body delivers the same intense hydration that the cream is designed to provide to your face but to your arms, legs, back, and hands.

4.4 Cold Cream Benefits

The benefits of cold cream are quite simple. By design, cold cream is meant to topically moisturize the skin, so anyone looking to boost the hydration of their skin can benefit from using this product. However, those with particularly sensitive skin or dry, itchy skin will benefit the most from using it daily to improve the texture and appearance of their complexion. These effects are likely the result of the cold cream’s ability to help restore the skin’s effectiveness as a natural barrier to the environment, something that is lost when your skin is too dry.

V. EVALUATION OF HERBAL COID CREAM

4Morphological Evaluation

- **Physical properties:** The cream was observed for the color, odor and appearance.

Physicochemical Evaluation:-

- **Washability:** The cream was applied on the hand and observed under the running .
- **pH:** The pH meter was calibrated with the help of standard buffer solution. Weigh 0.5 gm of cream dissolved it in 50.0ml of distilled water and its p H was measured with the help of digital pH meter.
- **Viscosity:** Viscosity of the cream was determined with the help of Brookfield viscometer at 100 rpm with the spindle no.
- **Spread ability test :** The cream sample was applied between the two glass slides and was compressed between the two-glass slide to uniform thickness by placing 100 gm. of weight for 5 minutes then weight was added to the weighing pan. The time in which the upper glass slide moved over the lower slide was taken as a measure of spread ability.

$$\text{Spread ability} = m * l / t$$
 Where M =weight tight to upper slide
 L =length moved on the glass slide
 T =time take
- **Irritancy test:** Mark an area (1 sq.cm) on the left-hand dorsal surface. The cream was applied to the specified area and time was noted. Irritancy, erythema, edema, was checked if any for regular intervals up to 24 hrs. and reported.

- **Test for microbial growth:** Agar media was prepared then the formulated cream was inoculated on the plate's agar media by streak plate method and a controlled is prepared by omitting the cream. The plates were placed in the incubator and are incubated in 37 °C for 24 hours. After the incubation period, the plates were taken out and the microbial growth were checked and compared with the control.
- **Dye test:** The scarlet red dye is mixed with the cream. Place a drop of the cream on a microscopic slide then covers it with a cover slip, and examines it under a microscope. If the disperse globules appear red the ground colorless. The cream is o/w type. The reverse condition occurs in w/o type cream i.e. the disperse globules appear colorless.
- **Homogeneity:** Homogeneity was tested via the visual appearance and test.

VI. RESULT AND DISCUSSION

Following evaluation parameters were performed to ensure superiority of prepared cold cream

6.1 Morphological Evaluation

Herbal cold cream was evaluated for morphological parameters showed in the Table 2. The color of formulation was yellowish. The odor of prepared formulations was pleasant and good acceptable which is desirable to cosmetic formulations. Texture and smoothness were acceptable as per requirement of cosmetic formulations.

Table 2: Morphological Evaluation

| Sr.No | Parameters | Observations |
|-------|------------|---------------|
| 1 | Colour | Whitish green |
| 2 | Odour | Pleasant |
| 3 | Texture | Smooth |

6.2 Physicochemical Evaluation

- **pH:** Herbal cold cream was evaluated for physicochemical parameters showed in the Table 3. The pH of the cream was found to be in range of 5.6 to 6.8 which is good for skin pH. The herbal formulation was shown pH nearer to skin required i.e. **pH 6.65**
- **Washability:** Washability test was carried out by applying a small amount of cream on the hand and then washing it with tap water.
- **Viscosity:** Viscosity of cream was done by using Brooke field viscometer at a temperature of 25 °C using spindle No. 63 at 2.5 RPM. According to the results all the three formulations showed adequate viscosity.
- **Test for microbial growth:** There was no signs of microbial growth after 24 hrs. of incubation at 37°C and it was comparable with the control.



Fig 8: Microbial Growth

- **Spread ability test:** The spread ability test showed that the formulated cream has good spreadable property. The separate in the description of evaluation test lesser the time taken for separation of the two slides better the spread ability.

- **Dye test:** The scarlet red dye is mixed with the cream. Place a drop of the cream on a microscopic slide covers it with a cover slip, and examines it under a microscope. The disperse globules appears colorless in the red ground i.e. w/o type cream.
- **Homogeneity:** The homogeneity of the formulated cream was judged by the visual appearance and touch. The appearance and touch of the cream were good.

VII. CONCLUSION

Natural remedies are more acceptable in the belief that they are safer with fewer side effects than the synthetic ones. Herbal formulations have growing demand in the world market. Herbal face packs are considered as sustaining and productive way to advance the appearance of skin. Herbal face packs or masks are used to stimulate blood circulation, rejuvenates those muscles and help to maintain the elasticity of the skin and remove dirt from skin pores. Thus, in the present work, it is a very good attempt to formulate the herbal face pack containing naturally available ingredients like neem, almond. It is suggested that the prepared formulation was physico-chemically and microbiologically stable, and possessed characteristics of a standard cosmeceutical's formulation for skincare.

REFERENCES

- [1]. Tejswini Devidas Navgire, Madhuri Baburao Pawar Formulation And Evaluation Of Cold Cream
- [2]. N. Shah, B.M. Methal, (2006) A Handbook of Cosmetic, Vallabh Prakashan.
- [3]. Saraf, S., & Kaur, C. D. (2010). Phytoconstituents as photoprotective novel cosmetic formulations. *Pharmacognosy reviews*, 4(7),
- [4]. B.S., Kalpesh K. Mehta, Anshu Gupta (2016). Dispensing Pharmacy A Practical Manual (p.p. 389-399). Pharma Med Press.
- [5]. Shah RN, Methal BM, A Hand book of Cosmetics Page No.1
- [6]. Myers D, Surfactant Science and Technology, VCH Publishers: 1992, Pp. 209-247.
- [7]. V.S. Rabade, M.S. Pawar, G.K. Titarmare. (2020). Formulation and Evaluation of Polyherbal Cold Cream. *International Journal for Pharmaceutical Research Scholars*, 9(1); 25-31.
- [8]. Nikhil Nitin Navindgikar, K.A. Kamalapurkar, Prashant S. Chavan. Formulation and Evaluation of multipurpose herbal cream. *Int J Curr Pharm Res*, Vol 12, Issue 3, 25-30.
- [9]. Saraf, S., & Kaur, C. D. (2010). Phytoconstituents as photoprotective novel cosmetic formulations. *Pharmacognosy reviews*, 4(7), 1.
- [10]. K. Kokate, A.P. Purohit, S.B. Gokhale (2014) Textbook of Pharmacognosy. Nirali Prakashan 50th edition, p.p. 9.1 & 14.132.
- [11]. S. Khadabadi, S.L. Deore, B.A. Baviskar. (2014), *Pharmacognosy and Phytochemistry, A Comprehensive Approach*, published by Pharma Med Press, 1st edition, p.p. 8.4
- [12]. Panda, H. (2000). *Herbal Cosmetics Hand Book*. National Institute of Industrial Re.
- [13]. Mali, A. S., Karekar, P., & Yadav, A. V. (2015). Formulation and evaluation of multipurpose herbal cream. *International Journal of Science and Research, International Journal of Science and Research*, 4(11), 1495-1498.
- [14]. R. Patel, H. U. Momin, R.L. Dhumal, K. L. Mohite, (2017), Prepara preparation and evaluation of multipurpose herbal cream, *Adv Pharm Life sci Res*; 5(1); 27-32.
- [15]. Himaja, N. (2017). Formulation and Evaluation of Herbal Cream from Azadirachta indica Ethanolic Extract. *IJournals: Int J Res Drug Pharm Sci*, 1(1), 23-6.
- [16]. Mukherjee, P. K. (2002). *Quality control of herbal drugs: an approach to evaluation of botanicals*. Business Horizons.
- [17]. Uddandu Saheb*, Aduri Prakash Reddy, K. Rajitha, B. Sravani, B. Vanitha, (2018). Formulation and Evaluation of Cream from containing plant extracts, *World Journal of Pharmacy and Pharmaceutical Sciences*, 7(5) :851-862.

- [18]. Sujith S Nair, Molly Mathew and Sreena K, Formulation and Evaluation of Herbal Cream containing Curcuma longa, INTERNATIONAL JOURNAL OF PHARMACEUTICAL AND CHEMICAL SCIENCES Vol. 1 (4) Oct-Dec 2012.
- [19]. SkUddanduSaheb, AduriPrakash Reddy, K Rajitha, B Sravani, B Vanitha. Formulation and evaluation of cream from naturally containing plant extracts. World J Pharm PharmSci 2018;7:851-62.
- [20]. Sai Lakshmi Jyothirmai Kala* and SupriyaPalaparthi, FORMULATION AND INVITROEVALUATION OF POLY HERBAL ANTI AGING FACE CREAM, World Journal of Pharmaceutical Research Volume 6, Issue 13, 717-733.
- [21]. Akhtar N, Khan BA, Khan MS, Mahmood T, Khan HMS, Iqbal M and Bashir S, Formulation Development and Moisturizing Effects of a Topical Cream of Aloe vera Extract, World Academy of Science, Engineering and Technology 75 2011.
- [22]. ManishaYogeshSonalkar, SachinAnnasahebNitave. Formulation and evaluation of polyherbal cosmetic cream. World J Pharm PharmSci 2016;5:772-9.
- [23]. KalpeshChhotalalAshara. Importance of trituration technique on preparation and evaluation of cold cream. Inventi Rapid Pharm Tech 2013;1-2:2012.
- [24]. Akash S. Mali, Karekar P, Dr. Yadav A. V, Formulation and Evaluation of Multipurpose Herbal Cream, International Journal of Science and Research (IJSR) Volume 4 Issue 11, November 2015.