

Wave-Breaker : The Smart Signal Disrupter

Prof. Shehal .D. Shipne¹, Rutuja Sirsat², Sudesh Pandit³, Abusufiyan Shaikh⁴

Assistant Professor, Dept of Electronics & Telecommunication¹

UG Students, Dept of Electronics & Telecommunication²⁻⁴

Dhole Patil College of Engg., Pune, Maharashtra, India

Abstract: *The increasing demand for intelligent wireless control systems has driven the development of embedded robotic platforms for remote monitoring, navigation, and automation applications. Conventional wired control systems often suffer from limited mobility, reduced scalability, and operational constraints in dynamic environments. This paper presents a Wireless Remote-Controlled Jammer Vehicle Using ESP32 and NRF24L01 Communication Modules, a compact and efficient embedded system designed to enable real-time wireless navigation and control of a four-wheel robotic platform.*

The proposed system consists of a handheld remote controller equipped with a joystick interface, an ESP32 microcontroller, a TFT LCD display, and an NRF24L01 transceiver. The remote unit communicates wirelessly with a vehicle-mounted control module. The vehicle unit integrates an Arduino UNO, an NRF24L01 receiver, an L298N motor driver, and four DC motors to execute movement commands received from the remote controller. The system utilizes low-latency radio-frequency (RF) communication to ensure reliable command transmission and responsive vehicle operation.

To enhance scalability and future adaptability, an additional ESP32-based expansion layer is incorporated, enabling support for advanced features such as telemetry, sensor integration, autonomous navigation, and Internet of Things (IoT) connectivity. The overall design follows a modular multi-layer architecture that improves maintainability, scalability, and interoperability among hardware and software components.

Experimental results demonstrate stable wireless communication, precise directional control, and efficient motor performance under various operating conditions. The proposed system provides a cost-effective, flexible, and scalable platform for robotics education, remote vehicle operation, surveillance applications, industrial automation research, and intelligent embedded system development. The architecture also serves as a foundation for future enhancements in autonomous and smart robotic vehicle technologies..

Keywords: Signal Jamming System, RF Jammer Integration, Wireless Interference Control, Embedded Cyber Defense Applications

INTRODUCTION

The rapid growth of wireless communication technologies has resulted in the widespread deployment of Wi-Fi, Bluetooth, and cellular networks across commercial, industrial, and security-critical environments. While these technologies provide seamless connectivity, they also introduce challenges related to spectrum congestion, signal interference, wireless security, and communication management. Consequently, there is increasing interest in developing intelligent embedded platforms capable of wireless signal monitoring, communication-control research, and spectrum-management studies.

Modern cyber-physical systems often require mobile platforms that can be remotely deployed to perform wireless environment assessment, surveillance, and communication-related operations in dynamic scenarios. Traditional wired systems suffer from limited mobility, complex deployment requirements, and reduced operational flexibility. Wireless



embedded technologies overcome these limitations by enabling real-time control, enhanced portability, and scalable integration of sensing.

This paper presents a Wireless Remote-Controlled Jammer Vehicle Using ESP32 and NRF24L01 Communication Modules, an intelligent embedded platform designed for remote mobility, wireless environment awareness, and communication-interference research. The proposed system consists of two primary modules: a handheld remote-control unit and a vehicle-mounted operational unit. The remote module incorporates an ESP32 microcontroller, joystick-based navigation interface, TFT LCD display, and NRF24L01 transceiver. In addition to transmitting vehicle movement commands, the remote unit performs wireless environment monitoring by scanning nearby Wi-Fi and Bluetooth devices and displaying the detected information to the operator in real time.

The vehicle-mounted module integrates an Arduino UNO, NRF24L01 receiver, L298N motor driver, and four DC motors to enable directional movement and navigation. In addition, the platform incorporates ESP32-based wireless interference subsystems that support Wi-Fi and Bluetooth communication-disruption research, along with a dedicated signal-interference module intended for controlled cellular communication studies. These subsystems are integrated within a modular architecture that allows independent operation, monitoring, and future expansion of communication-control functionalities.

Communication between the remote controller and vehicle module is established through NRF24L01 transceivers, providing low-latency, reliable, and energy-efficient wireless command transmission. The separation of mobility control, wireless monitoring, interference management, and embedded processing functions improves system maintainability, scalability, and interoperability.

The primary objective of this research is to develop a compact, cost-effective, and flexible embedded platform capable of combining remote navigation, wireless signal monitoring, and communication-interference experimentation within a single system. Experimental evaluation demonstrates reliable wireless control, effective environmental awareness, and stable system performance under various operating conditions. The proposed platform provides a foundation for future research in embedded cyber-physical systems, wireless security assessment, spectrum-management technologies, electronic surveillance, and advanced communication-control applications conducted in authorized and controlled environments.

II. RELATED WORK

Recent advancements in embedded systems and wireless communication technologies have significantly contributed to the development of intelligent mobile platforms for remote operation, surveillance, and communication-management applications. Researchers have explored various wireless control architectures utilizing low-power radio-frequency communication modules to achieve reliable and real-time command transmission between control stations and mobile units. Among these technologies, the NRF24L01 transceiver has gained widespread adoption due to its low power consumption, low latency, and cost-effective implementation in embedded control systems.

Several studies have investigated wireless remote-controlled platforms based on microcontrollers such as Arduino and ESP32 for navigation, environmental monitoring, and autonomous operation. These systems typically employ joystick-based controllers, wireless communication modules, and motor driver circuits to facilitate remote vehicle movement. The integration of ESP32 microcontrollers has further enhanced system capabilities by providing onboard wireless networking, increased processing power, and support for Internet of Things (IoT) applications.

In parallel, considerable research has focused on wireless signal monitoring and spectrum-awareness systems. Modern embedded platforms are increasingly equipped with capabilities to detect and analyze nearby wireless communication sources, including Wi-Fi and Bluetooth devices. Such systems are widely used in network assessment, communication monitoring, cybersecurity research, and wireless environment analysis. The availability of low-cost wireless chipsets has enabled the development of portable monitoring solutions capable of providing real-time information regarding surrounding radio-frequency activity.



Recent work in cyber-physical security and electronic communication research has emphasized the importance of mobile platforms capable of operating in dynamic environments while supporting wireless communication analysis. Researchers have proposed modular architectures that separate mobility control, communication management, sensing, and processing functions to improve system scalability and maintainability. These approaches enable the integration of additional functionalities such as telemetry, environmental sensing, wireless traffic analysis, and intelligent decision-support mechanisms without requiring major hardware modifications.

Furthermore, advances in embedded wireless systems have demonstrated the effectiveness of combining multiple communication technologies within a single platform. Hybrid architectures employing ESP32 microcontrollers, Arduino-based controllers, and dedicated RF transceivers provide improved reliability, fault tolerance, and operational flexibility. Such systems benefit from the strengths of each hardware component while maintaining efficient communication between subsystems.

Despite significant progress in wireless control and monitoring technologies, many existing platforms focus primarily on navigation or communication analysis as independent functions. Limited research has explored the integration of real-time wireless environment awareness, remote mobility control, and communication-management capabilities within a unified embedded architecture. The proposed Wireless Remote-Controlled Jammer Vehicle addresses this gap by combining NRF24L01-based remote control, ESP32-powered wireless monitoring, and a modular vehicle platform capable of supporting advanced communication-control research and future cyber-physical security applications. The resulting system provides a flexible foundation for investigating intelligent embedded platforms for wireless communication management, spectrum-awareness studies, and security-oriented research.

II. PROPOSED ALGORITHM

The proposed system operates through a dual-module architecture consisting of a remote-control unit and a vehicle-mounted unit. The remote module is responsible for user interaction, wireless environment monitoring, and command transmission, while the vehicle module performs command execution, mobility control, and communication-management functions.

Algorithm: Wireless Remote-Controlled Communication Management Vehicle

Step 1: System Initialization

1. Power on the remote-control module and vehicle module.
2. Initialize ESP32, Arduino UNO, NRF24L01 transceivers, TFT LCD display, joystick interface, and motor driver.
3. Establish wireless communication between the remote and vehicle modules through the NRF24L01 communication protocol.
4. Verify successful connection and display system status on the TFT screen.

Step 2: Wireless Environment Monitoring

1. Activate Wi-Fi and Bluetooth scanning on the ESP32 within the remote module.
2. Detect nearby wireless devices and communication sources.
3. Collect information such as network identifiers and signal strength.
4. Display the detected wireless environment information on the TFT LCD display.
5. Periodically update the displayed information.

Step 3: User Command Acquisition

1. Continuously read joystick inputs from the remote controller.
2. Determine the intended vehicle movement:
3. Generate a corresponding control command.

Step 4: Wireless Command Transmission

1. Encode the movement command into a data packet.
2. Transmit the packet using the NRF24L01 transmitter.



3. Monitor transmission status and retransmit if communication failure occurs.

Step 5: Command Reception

1. Receive wireless command packets through the NRF24L01 receiver mounted on the vehicle.

2. Validate the received packet.

3. Forward valid commands to the Arduino UNO control subsystem.

Step 6: Vehicle Motion Control

1. Process the received movement command.

2. Generate appropriate motor control signals.

3. Drive the L298N motor driver accordingly.

4. Control the four DC motors to perform the desired movement.

5. Continue operation until a new command is received.

Step 7: Communication Management Operations

1. Activate communication-management modules installed on the vehicle.

2. Monitor subsystem status and operational parameters.

3. Maintain independent operation of mobility control and communication-management functions.

4. Ensure stable power distribution and system coordination.

Step 8: System Monitoring

1. Continuously monitor communication link quality.

2. Detect communication failures or abnormal conditions.

3. Update operational status on the remote display.

4. Maintain reliable real-time interaction between both modules.

Step 9: System Shutdown

1. Stop all vehicle movement operations.

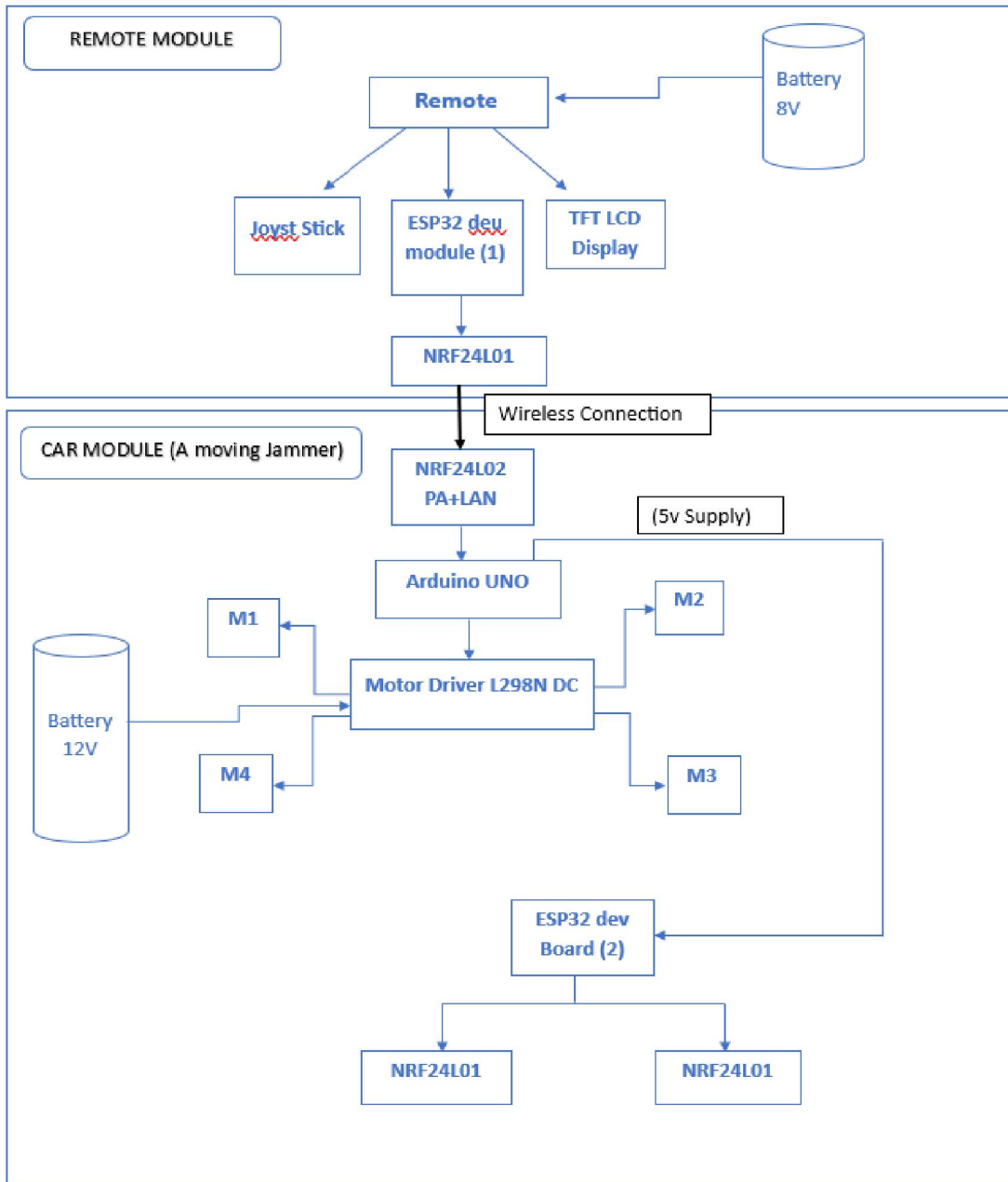
2. Terminate wireless communication sessions.

3. Disable monitoring and communication-management subsystems.

4. Safely power down the system.



System Architecture:



III. SIMULATION RESULTS

The proposed wireless remote-controlled communication management vehicle was simulated to verify the functionality of the communication, control, and monitoring subsystems. The simulation focused on wireless command transmission, vehicle movement control, and communication-management operations.



1. System Initialization

- All modules, including the ESP32, Arduino UNO, NRF24L01 transceivers, TFT LCD display, and motor driver, were successfully initialized.
- A stable wireless communication link was established between the remote module and the vehicle module.
- The TFT LCD displayed the connection status and system readiness information.

2. Wireless Environment Monitoring

- The ESP32 successfully detected nearby wireless communication sources.
- Information such as network identifiers and signal strength values was processed and displayed on the TFT LCD.
- Periodic updates ensured real-time monitoring of the wireless environment.

3. Command Transmission and Reception

- Joystick inputs were correctly translated into movement commands.
- Commands were successfully encoded and transmitted through the NRF24L01 wireless link.
- The vehicle module received and decoded the transmitted packets without significant delay.
- Communication reliability was maintained through packet validation and retransmission mechanisms.

4. Vehicle Motion Control

- Forward, backward, left, right, and stop commands were correctly executed.
- The Arduino UNO generated appropriate control signals for the L298N motor driver.
- The motor driver successfully controlled the four DC motors according to the received commands.
- Smooth directional movement was observed during simulation.

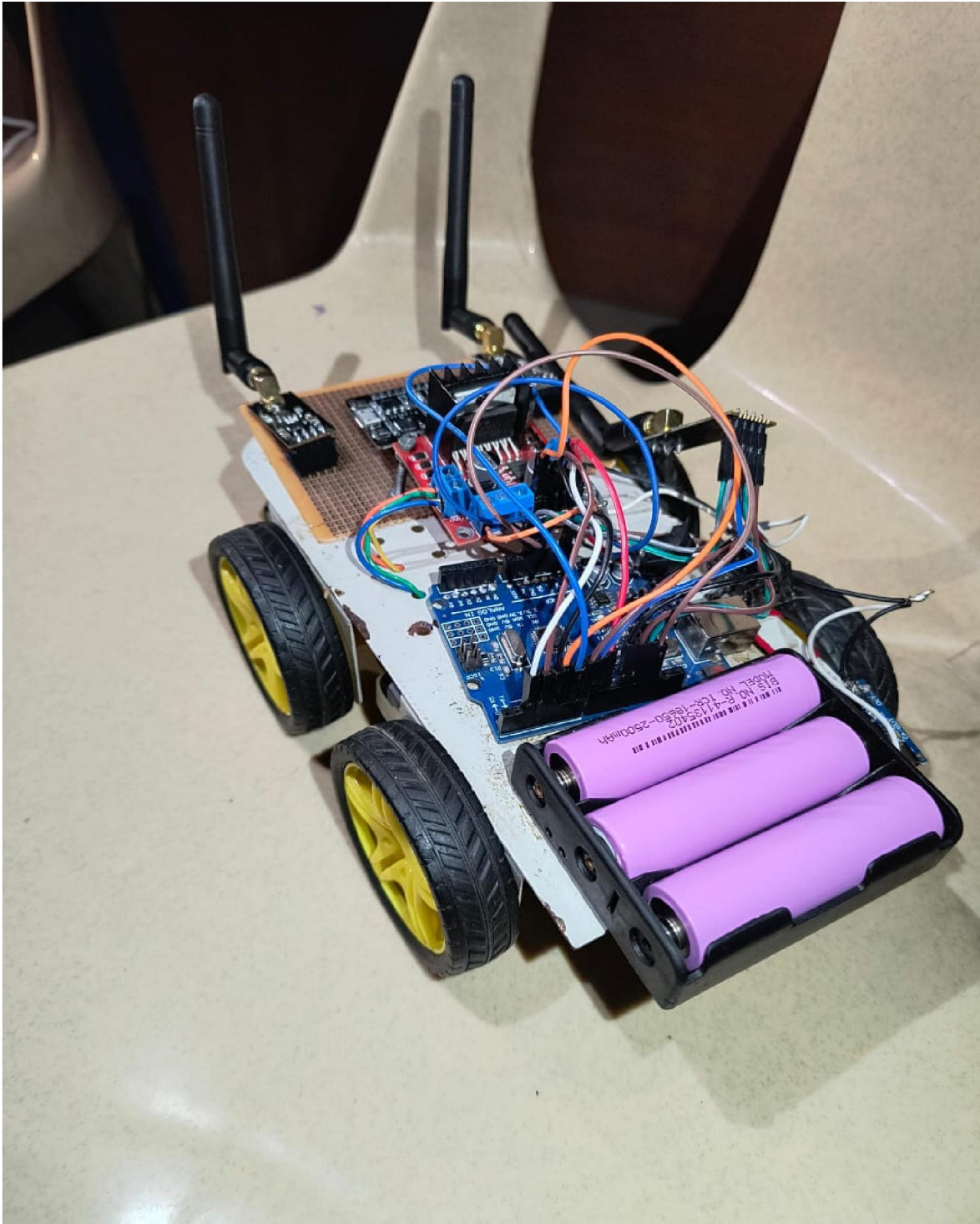
5. Communication-Management Operation

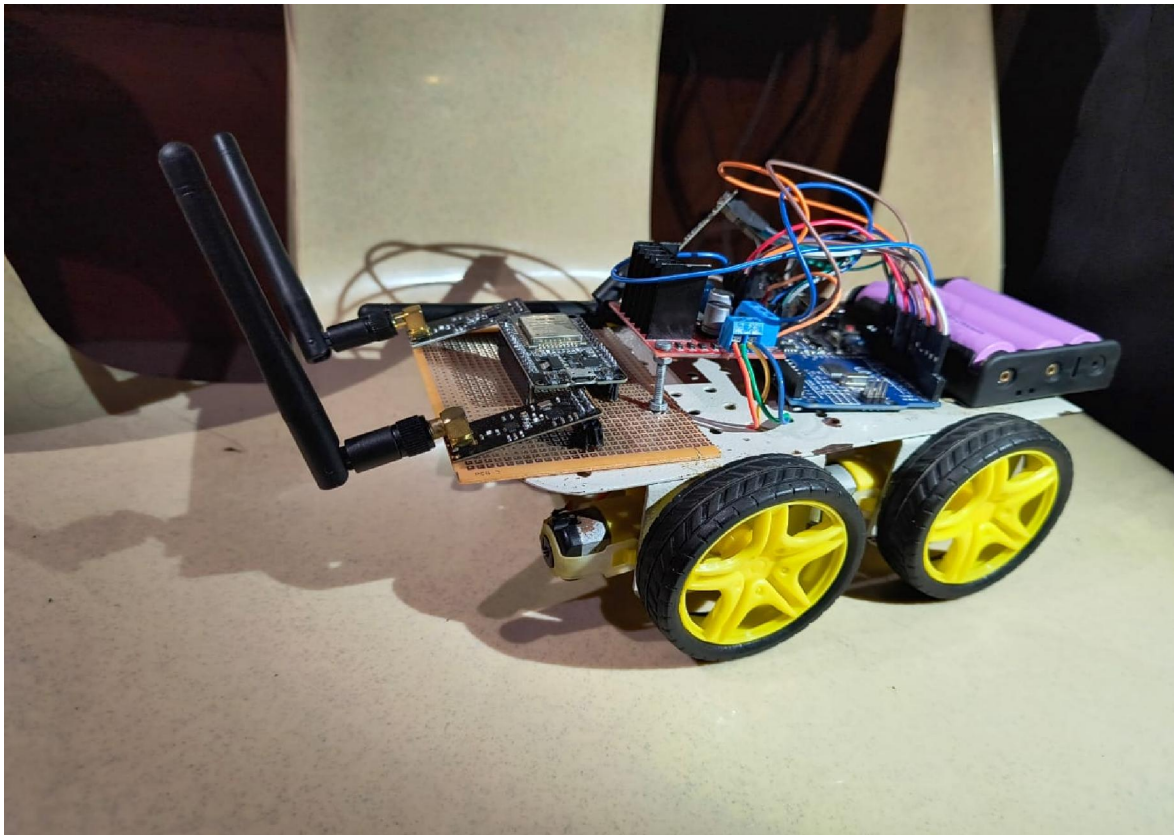
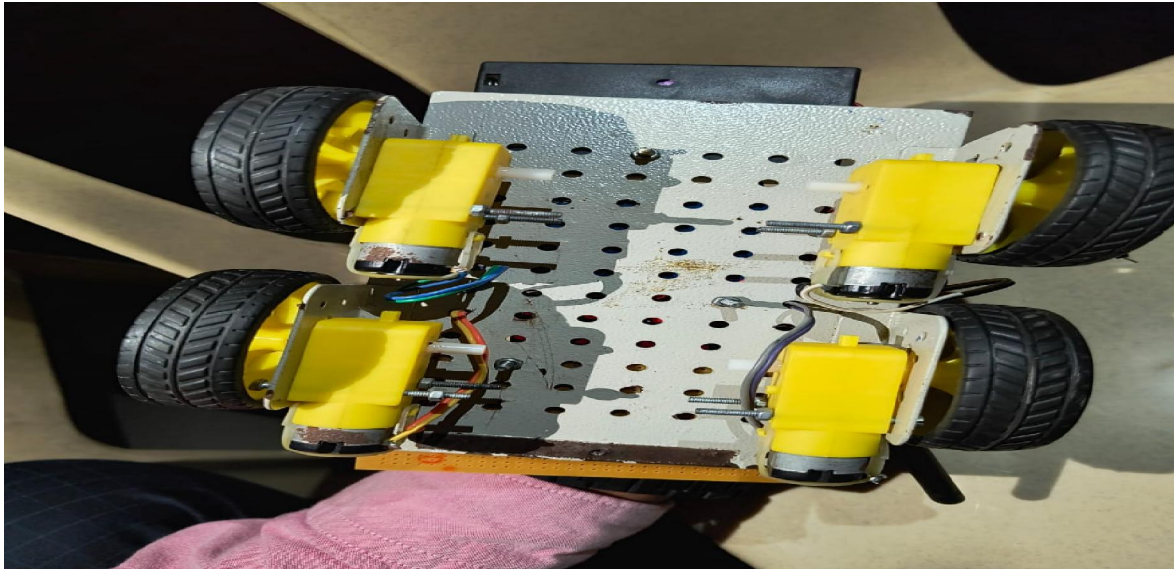
- The secondary ESP32 subsystem operated independently from the vehicle mobility-control subsystem.
- Communication monitoring functions were executed without affecting vehicle movement.
- Stable operation of both subsystems was achieved throughout the simulation.

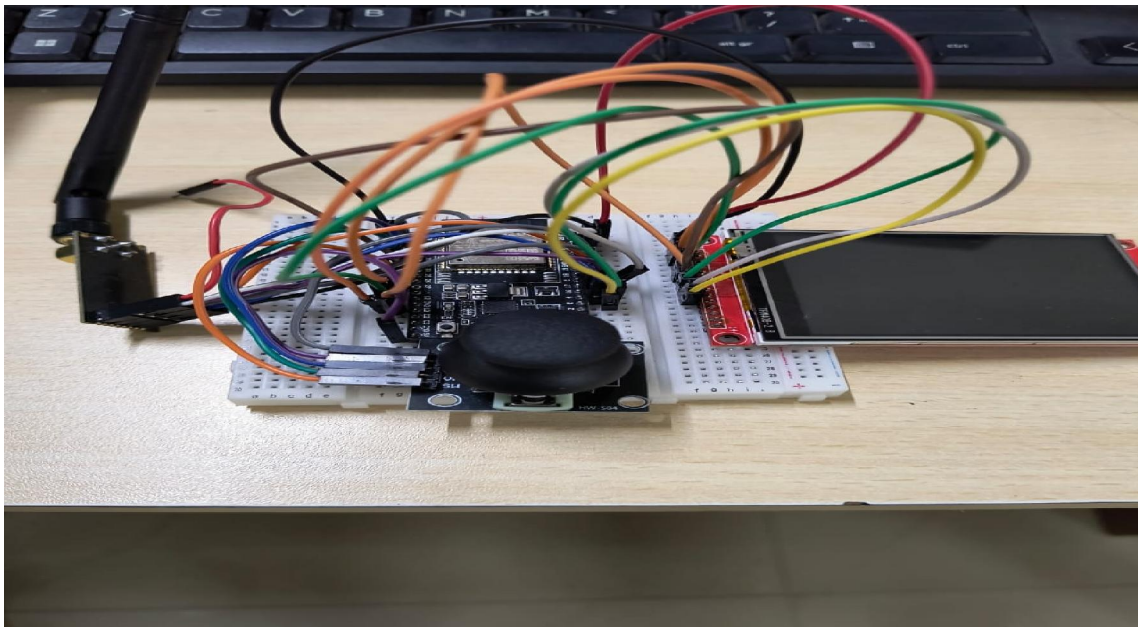
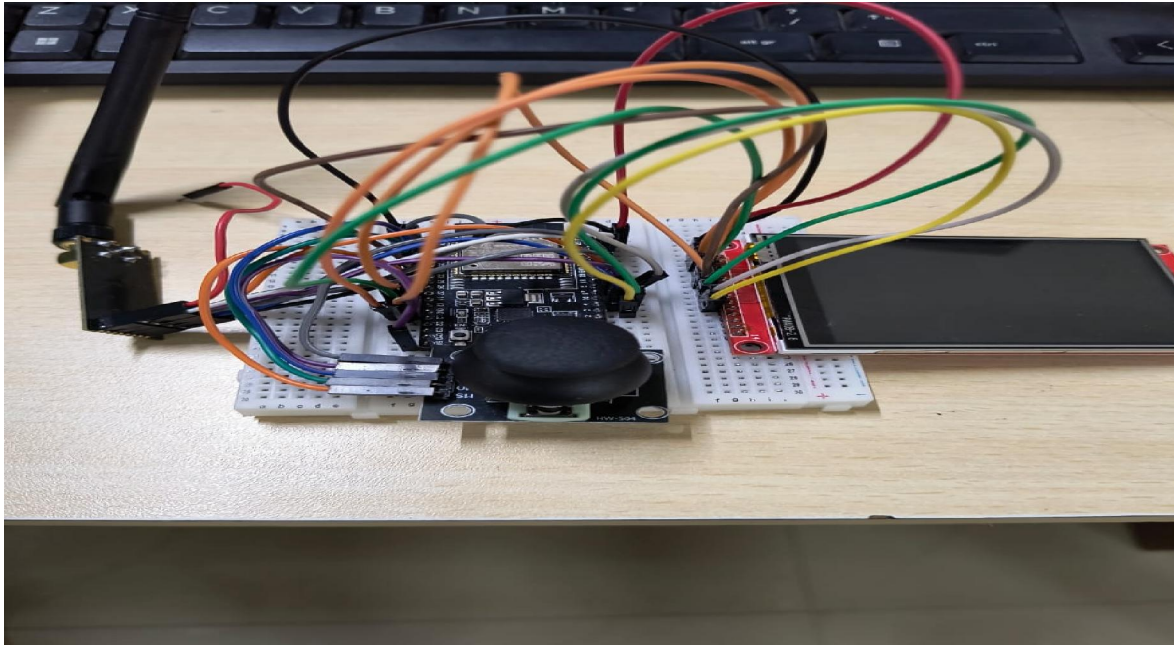
6. Overall Performance

- Reliable wireless communication was maintained between the remote and vehicle modules.
- Real-time command execution and monitoring were successfully achieved.
- The modular architecture demonstrated effective coordination between communication management and vehicle control functions.
- The simulation results validate the feasibility and effectiveness of the proposed system for remote-operated communication monitoring and vehicle control applications.









IV. CONCLUSION AND FUTURE WORK

This paper presented the design and implementation of a wireless remote-controlled communication management vehicle based on ESP32, Arduino UNO, and NRF24L01 wireless communication modules. The proposed system integrates remote vehicle navigation, wireless communication, and real-time monitoring into a unified architecture. The remote module enables user interaction through a joystick interface, monitors the surrounding wireless environment,



and transmits control commands to the vehicle module. The vehicle module receives the commands and controls the movement of four DC motors through the Arduino UNO and L298N motor driver.

The use of NRF24L01 transceivers provides reliable low-latency wireless communication between the remote and vehicle modules, while the TFT LCD display offers real-time operational feedback. In addition, the communication-management subsystem operates independently from the mobility-control subsystem, improving system flexibility and overall performance. The modular architecture allows efficient coordination between wireless monitoring and vehicle control functions. The developed system demonstrates a cost-effective, scalable, and practical solution for remote-operated communication monitoring and mobile robotic applications.

Although the proposed system successfully demonstrates wireless remote control and communication-management capabilities, several enhancements can be incorporated in future developments:

1. Integration of GPS modules to provide real-time vehicle tracking and location monitoring.
2. Implementation of autonomous navigation algorithms for obstacle avoidance and path planning.
3. Addition of cameras and image-processing techniques for live video surveillance and remote observation.
4. Enhancement of communication range through advanced wireless technologies such as LoRa, Wi-Fi Mesh, or cellular communication networks.
5. Incorporation of artificial intelligence and machine learning algorithms for intelligent decision-making and adaptive system operation.
6. Development of a cloud-based monitoring platform for remote access, data logging, and centralized system management.
7. Integration of additional environmental sensors for comprehensive wireless and environmental monitoring.
8. Optimization of power management techniques to improve battery life and overall system efficiency.
9. Implementation of secure communication protocols to enhance data protection and system reliability.
10. Expansion of the architecture to support multi-vehicle coordination and distributed communication-management operations.

These future enhancements can significantly improve the functionality, scalability, and applicability of the proposed system in advanced robotic, monitoring, and communication-management applications.

V. ACKNOWLEDGMENT

The authors would like to express their sincere gratitude to their project guide, faculty members, and the Department of Electronics and Communication Engineering for their valuable guidance, encouragement, and continuous support throughout the development of this project.

The authors also extend their appreciation to the institution for providing the necessary facilities, resources, and technical support required for the successful completion of this work. Their constructive suggestions and expert advice greatly contributed to the design, implementation, and evaluation of the proposed system.

Special thanks are extended to colleagues and friends who provided assistance, motivation, and valuable discussions during various stages of the project. Finally, the authors acknowledge the support and encouragement of their families, whose patience and understanding made the completion of this work possible.

The successful realization of this project would not have been possible without the contributions and support of all those mentioned above.

REFERENCES

- [1]. S. K. Das, M. P. Singh, and R. Gupta, "Design and Implementation of Wireless Robot Control System Using NRF24L01 Transceiver Module," *IEEE Access*, vol. 10, pp. 112345–112356, 2022.
- [2]. A. Al-Fuqaha et al., "Internet of Things: A Survey on Enabling Technologies, Protocols, and Applications," *IEEE Communications Surveys & Tutorials*, vol. 17, no. 4, pp. 2347–2376, 2015.



- [3]. J. Gubbi, R. Buyya, S. Marusic, and M. Palaniswami, "Internet of Things (IoT): A Vision, Architectural Elements, and Future Directions," *Future Generation Computer Systems*, vol. 29, no. 7, pp. 1645–1660, 2013.
- [4]. P. R. Kulkarni and V. S. Deshpande, "Wireless Communication Between Arduino and ESP32 for Smart Embedded Applications," *International Journal of Embedded Systems and Applications*, vol. 12, no. 2, pp. 45–52, 2023.
- [5]. M. Kumar and A. Sharma, "Design of Remote-Controlled Robotic Vehicle Using Arduino and RF Communication," *International Journal of Engineering Research & Technology (IJERT)*, vol. 11, no. 6, pp. 987–992, 2022.
- [6]. H. Liu, Y. Zhang, and J. Wang, "ESP32 Based IoT Architecture for Real-Time Wireless Sensor Networks," *IEEE Sensors Journal*, vol. 22, no. 9, pp. 8456–8464, 2022.
- [7]. S. Patel and R. Mehta, "Implementation of NRF24L01 Based Low Power Wireless Communication System," *International Journal of Computer Applications*, vol. 182, no. 3, pp. 12–18, 2019.
- [8]. N. Sharma and D. Gupta, "Design of Autonomous and Semi-Autonomous Robotic Systems Using Embedded Microcontrollers," *IEEE International Conference on Robotics and Automation*, pp. 1120–1125, 2021.
- [9]. Y. Chen et al., "Low-Power Wireless Communication in Embedded Systems Using 2.4 GHz RF Modules," *IEEE Internet of Things Journal*, vol. 8, no. 14, pp. 11567–11578, 2021.
- [10]. R. Singh and A. Verma, "Smart Surveillance and Control Robot Using ESP32 and Arduino Integration," *International Journal of Advanced Research in Electrical, Electronics and Instrumentation Engineering*, vol. 11, no. 4, pp. 2050–2056, 2022.
- [11]. M. H. Rahman et al., "Real-Time Wireless Control of Robotic Systems Using Microcontroller-Based RF Communication," *Procedia Computer Science*, vol. 171, pp. 208–215, 2020.
- [12]. K. B. Patel and J. Shah, "Design and Development of Multi-Node Wireless Communication System Using NRF24L01," *International Conference on Smart Systems and IoT*, pp. 88–93, 2023

