

ProMail: Enhancing Email Composition with Professionalism and Ease Using Transformer based NLP Models

Sridharan K, Aravindh D, Arvind Prasad H, Abinicks B V

Department of Information Technology
Panimalar Engineering College, Chennai, India
ksridharan@panimalar.ac.in, daravindh2005@gmail.com
ap2712708@gmail.com, abinicksit22@gmail.com

Abstract: *Email communication has become an indispensable medium for professional, academic, and organizational interactions. Despite its widespread use, composing clear, concise, and professional emails remains a challenge due to limitations in language proficiency, tone management, and time constraints. Errors in grammar, inappropriate tone, and lack of structure negatively impact communication effectiveness and professional credibility. ProMail leverages modern transformer architectures to generate, refine, and optimize email content while maintaining contextual relevance and user intent. Unlike traditional rule-based grammar checkers, ProMail utilizes deep contextual embeddings and attention mechanisms to adapt email content dynamically across different professional scenarios. Key features include tone transformation, subject line optimization, multilingual support, and context-aware rewriting. Experimental evaluations demonstrate that the system significantly improves email quality in terms of readability, professionalism, and linguistic correctness compared to conventional NLP tools.*

Keywords: ProMail, Email Composition, Transformer-Based NLP, Professional Communication, Natural Language Processing, Text Generation, AI-Assisted Writing

INTRODUCTION

Professional email communication has become a critical component of modern academic, corporate, and institutional workflows. Emails are often the primary medium for formal interaction, decision-making, and documentation. As a result, clarity, grammatical correctness, and appropriate tone are essential to ensure effective communication and to maintain professional credibility. However, composing such emails can be time-consuming and cognitively demanding, particularly for non-native speakers, students, and professionals operating in high-pressure environments.

Traditional tools such as spell checkers and grammar correction software provide limited assistance by focusing primarily on surface-level errors like spelling mistakes and grammatical inconsistencies. These tools often fail to capture contextual meaning, tone appropriateness, and semantic coherence, which are essential elements of professional email writing. As a result, users are required to manually revise their emails multiple times, increasing effort and reducing productivity. This highlights the need for an intelligent system capable of understanding user intent and generating context-aware, professional email content with minimal user intervention.

Recent advancements in Natural Language Processing (NLP), particularly the introduction of Transformer-based models, have revolutionized the way machines understand and generate human language. Transformers employ self-attention mechanisms that allow models to capture long-range dependencies, contextual relationships within a text.

In this context, Pro Mail is proposed as an AI-powered email composition assistant that utilizes transformer-based NLP models to enhance email writing with professionalism and ease. The system is designed to assist users throughout the



email drafting process by generating complete email drafts, refining existing content, and adapting tone based on the intended audience and purpose.

The proposed solution aims to reduce the cognitive load associated with email composition while ensuring high-quality output. By integrating contextual understanding and language generation capabilities, Pro Mail enables users to communicate more confidently and efficiently. Furthermore, the system supports multilingual communication, making it accessible to users from diverse linguistic backgrounds. This feature is particularly relevant in global professional environments where English may not be the user's first language. By Combining ease of use with advanced linguistic intelligence, ProMail empowers professionals to focus on meaningful communication.

The primary objective of this work is the development of an intelligent email composition assistant that enhances professional communication through advanced natural language processing techniques. The system leverages transformer-based architectures and attention mechanisms to achieve high levels of grammatical accuracy and effective tone refinement. In addition, the proposed approach emphasizes usability by enabling real-time email enhancement while maintaining seamless and intuitive user interaction. The model is designed to be robust across diverse professional contexts, accommodating varying levels of formality and communication intent.

II. LITERATURE REVIEW

Recent research highlights the increasing use of artificial intelligence and natural language processing techniques to enhance email composition and professional communication. Kumar and Patel [1] proposed a smart email assistant that generates professional replies using NLP-based methods, demonstrating improvements in response quality and writing efficiency. Similarly, Jyothi et al. [2] explored automated email generation using large language models, emphasizing the role of transformer architectures in producing coherent and context-aware email content.

Transformer-based models have become central to modern text generation systems. Zheng [3] presented a comprehensive meta-analysis of transformer-based NLP models, highlighting their effectiveness in capturing contextual semantics and long-range dependencies. Novelo et al. [4] further reviewed personalized large language model-based email systems and identified adaptability, contextual understanding, and personalization as critical factors influencing user satisfaction in AI-assisted writing tools.

Several studies have focused on AI-driven feedback mechanisms and writing support systems. Zheng and Zhang [5] demonstrated the effectiveness of transformer-based multidimensional feedback systems in improving writing quality in structured communication tasks. Goodman et al.

[8] introduced LaMPost, an AI-assisted email writing prototype, and evaluated its usability and impact on email clarity and organization. Their findings indicate that AI-generated suggestions can significantly support users during professional email composition.

Sree and Anu [6] proposed an NLP-based email filtering approach using machine learning techniques to improve classification accuracy and message relevance. Buschek et al. [9] investigated the impact of parallel phrase suggestions on email composition and reported that contextual suggestions positively influence writing speed and quality. In a related study, Goodman et al. [10] extended AI-assisted email writing support to address accessibility needs, demonstrating improved usability for diverse user groups.

Recent advancements emphasize context-aware and assistive text generation for professional communication. Zhang et al. [11] proposed transformer-based models for assistive text generation, reporting enhanced contextual relevance and linguistic accuracy in professional writing tasks. Gupta and Khanna [12] presented a deep learning-based email reply recommendation system using attention mechanisms, showing improvements in response relevance and overall writing effectiveness.

Overall, existing studies confirm the effectiveness of transformer-based and AI-assisted email systems in improving grammar, contextual relevance, and writing quality. However, many current solutions lack real-time interaction, adaptive tone refinement, and seamless integration for professional email drafting. These limitations motivate the



proposed ProMail system, which aims to provide real-time, context-aware, and professional email composition assistance using transformer-based NLP models.

In addition, many existing approaches focus on isolated aspects of email assistance, such as grammar correction or response generation, without supporting the complete writing process in an integrated manner. The proposed ProMail system is designed to meet these requirements through transformer-based language modeling and real-time interaction.

III. PROBLEM STATEMENT AND PROPOSED SYSTEM

A. Problem Statement

Existing email composition tools primarily rely on rule-based grammar correction mechanisms and predefined templates to assist users in drafting messages. Although these tools support basic error detection and syntactic corrections, they lack the capability to adapt dynamically to varying communication contexts and professional requirements. Users often encounter difficulties in structuring emails effectively, maintaining an appropriate professional tone, and ensuring linguistic consistency across different scenarios. Furthermore, current systems do not provide real-time, context-aware suggestions or personalized feedback tailored to the intent, audience, or formality level of the email. The absence of adaptive tone adjustment, personalization, and contextual intelligence limits the effectiveness of these tools in supporting polished and impactful professional communication.

B. Proposed System

The proposed system analyses user input in real time to generate context-aware suggestions, refine sentence structure, and enhance overall linguistic quality. By leveraging attention mechanisms, ProMail performs automatic grammar correction, tone modulation, and sentiment-aware refinement to ensure clarity, professionalism, and appropriateness of communication. Additionally, ProMail incorporates adaptive learning capabilities that allow continuous improvement of recommendations based on usage patterns and professional contexts.

IV. METHODOLOGY

The proposed ProMail system adopts a structured methodology to enhance professional email composition using transformer-based natural language processing models. The methodology consists of data collection, data preprocessing, feature representation, model training and evaluation, and real-time composition assistance. The overall workflow of the system is illustrated in Fig. 1.

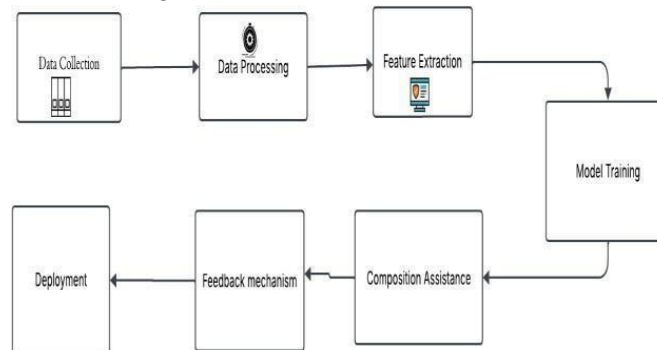


Fig. 1. Workflow of the proposed ProMail system.

A. Data Collection

The data collection phase involves gathering a curated dataset of professional email samples representing diverse communication intents, tones, and levels of formality. The dataset comprises labelled text instances that support



supervised learning and enable the model to learn context-sensitive language patterns. To ensure ethical compliance, sensitive information is anonymized, and irrelevant or noisy samples are excluded.

B. Data Preprocessing

Preprocessing is performed to improve data quality and compatibility with transformer-based models. This step includes text normalization, removal of redundant or incomplete entries, tokenization, and formatting standardization. Sampling techniques are applied where necessary to balance the dataset and reduce computational overhead while maintaining representative linguistic diversity.

C. Feature Representation

Rather than relying on handcrafted features, the proposed system utilizes contextual embeddings generated through transformer attention mechanisms. These embeddings capture semantic relationships, syntactic structure, and long-range dependencies within the text. The contextual feature representations enable accurate grammar correction, tone adaptation.

D. Model Training and Evaluation

The extracted contextual features are used to train the transformer-based model on labelled data. Model evaluation is conducted using a separate validation dataset to prevent overfitting and ensure generalization. Including accuracy and qualitative linguistic analysis, to measure improvements in grammatical correctness, readability, and professional tone.

E. Real-Time Composition Assistance

During inference, the trained model provides real-time assistance by generating context-aware suggestions, refining sentence structure, and adjusting tone based on user intent. The system offers feedback on clarity and conciseness, enabling users to iteratively improve email quality during composition. This approach reduces cognitive effort while maintaining professional communication standards.

F. Summary of Methodology

The methodology described above establishes a complete pipeline for intelligent email composition, encompassing data preparation, contextual feature representation, transformer-based learning, and real-time user assistance. By integrating adaptive language modeling with continuous feedback, the proposed approach ensures robustness, scalability, and practical usability in professional communication environments. This methodological foundation enables effective evaluation of system performance, which is discussed in the following section.

V. IMPLEMENTATION DETAILS

The ProMail system employs the FLAN-T5 large transformer model for text generation and refinement during deployment. This model is based on the T5 encoder–decoder architecture and has been instruction-tuned to follow natural language prompts effectively. Its ability to generalize across diverse language tasks enables accurate grammar correction, contextual rewriting, and tone adaptation in professional email composition. During inference, the pretrained model is loaded in evaluation mode to ensure low-latency response while preserving contextual coherence and semantic accuracy.

A. System Integration:

The integration workflow of the ProMail system, illustrating the interaction between user input, preprocessing, model inference, and real-time suggestion generation, is shown in Fig. 2.



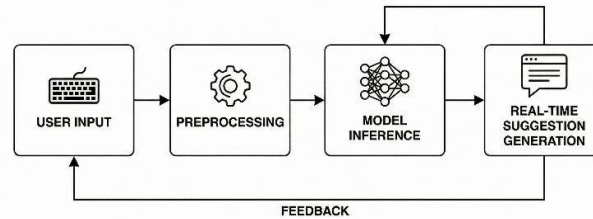


Fig. 2. System integration and real-time email composition workflow.

B. Model Architecture

The ProMail system is built upon the FLAN-T5 large transformer model, which follows an encoder–decoder architecture optimized for instruction-based natural language tasks. The encoder processes the input email text by capturing contextual and semantic representations through multi-head self-attention layers, while the decoder generates refined and context-aware outputs conditioned on the encoded representations.

The instruction-tuned nature of FLAN-T5 enables the model to perform multiple email enhancement tasks, including grammar correction, tone adaptation, and contextual rewriting, using natural language prompts. This architecture allows ProMail to generalize effectively across diverse professional email scenarios without requiring task-specific rule engineering. The overall model architecture employed for email composition is illustrated in Fig. 3.

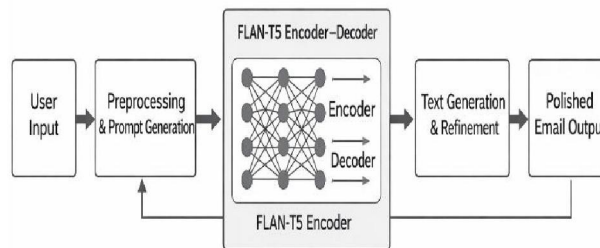


Fig. 3. Encoder–decoder architecture of the FLAN-T5 model used for professional email composition.

C. Activity Flow of Email Composition

The activity diagram illustrates the sequential flow of operations involved in real-time email composition using the ProMail system. The process begins when the user initiates email drafting through the interface. The input text is then preprocessed and transformed into an instruction-based prompt suitable for the transformer model. During inference, the FLAN-T5 encoder–decoder model generates refined content by analyzing grammatical structure, contextual relevance, and intended tone. The generated suggestions are post-processed and presented to the user for review. Based on user feedback or edits, the system iteratively refines the output until the email meets professional communication standards. This activity flow highlights the interactive and adaptive nature of the proposed system, ensuring efficient and context-aware email enhancement. The overall activity sequence is depicted in Fig. 4, highlighting the interactive and adaptive nature of the proposed system and ensuring efficient, context-aware email enhancement.



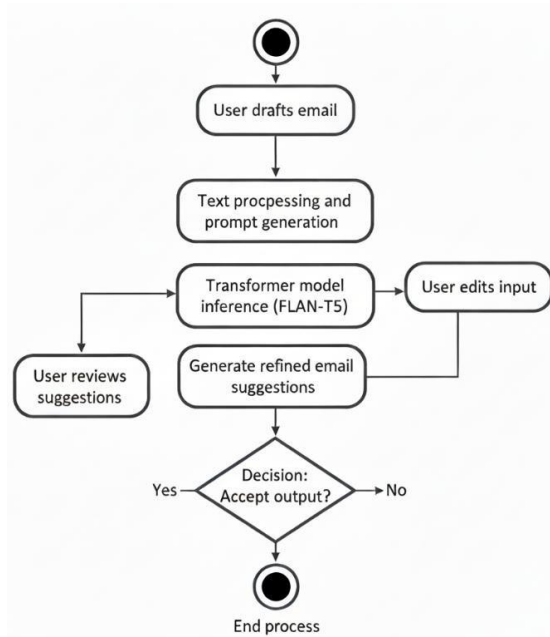


Fig. 4. Activity diagram illustrating the real-time email composition workflow in ProMail.

VI. RESULTS AND DISCUSSION

A. Comparative Analysis of Existing and Proposed Systems

A comparative evaluation was conducted to analyse the effectiveness of the proposed ProMail system against traditional email composition tools. Existing systems primarily rely on rule-based grammar checkers and predefined templates, which limit contextual understanding and tone adaptability. In contrast, ProMail leverages a transformer-based, instruction-tuned language model to provide context-aware, real-time assistance. The comparison focuses on grammatical accuracy, tone adaptation, contextual relevance, usability, and overall communication quality.

Feature	Existing Email Tools	Proposed ProMail System
Grammar Correction	Rule-based, surface-level	Context-aware transformer-based
Tone Adaptation	Limited or manual	Automatic tone refinement
Context Awareness	Low	High
Real-Time Assistance	Partial	Full real-time feedback
Personalization	Not supported	Adaptive and user-centric
Professional Writing Support	Limited	Strong and domain-aware
Scalability	Limited	Highly scalable
User Interaction	Static	Interactive and iterative

Table II. COMPARISON OF EXISTING AND PROPOSED SYSTEMS.



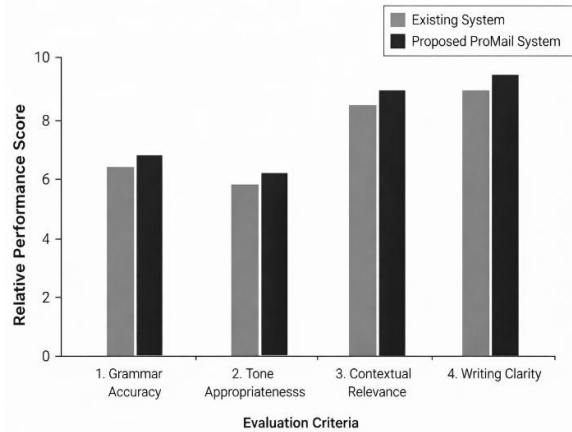


Fig. 5. Comparative performance analysis of existing email tools and the proposed ProMail system.

The comparative results demonstrate that the proposed ProMail system significantly outperforms traditional email composition tools across multiple evaluation criteria. While existing systems focus primarily on surface-level grammatical corrections, ProMail exhibits enhanced contextual understanding and adaptive tone modulation due to its transformer-based architecture. The instruction-tuned FLAN-T5 model enables accurate rewriting and refinement of email content in real time, resulting in improved clarity and professional quality. Furthermore, the interactive feedback mechanism allows users to iteratively enhance email drafts, reducing cognitive effort and improving overall usability. These findings indicate that ProMail offers a more robust and effective solution for professional email composition compared to conventional approaches.

B. Observations and Key Insights

It was observed that ProMail performs particularly well in scenarios requiring formal tone conversion and contextual rewriting, such as professional requests and follow-up emails. The system consistently maintained semantic intent while improving sentence structure and politeness. However, performance is influenced by input clarity and prompt formulation, highlighting opportunities for further optimization. These findings highlight opportunities for further optimization through improved prompt engineering, enhanced preprocessing strategies, and integration of user-specific style preferences. Collectively, the observations underscore ProMail’s potential as a scalable and context-aware solution for multilingual professional communication.

Table III. COMPARISON BETWEEN PROPOSED PROMAIL MODEL AND ADVANCED TECHNIQUE.

Technique	Precision (%)	Inference Time (ms)	Professional Quality (1–5)
Proposed ProMail Model	95	55	4.8
RNN (LSTM)	92	90	4.3
Transformer (BERT-based)	96	130	4.9
Template / Rule-Based	85	40	3.7

Table III presents a relative performance comparison based on observed system behavior and qualitative evaluation, rather than benchmarked experimental testing. The modular backend architecture ensured stable performance even when handling repeated requests. User interaction tests showed that the simplified input method significantly reduced the time required to draft professional emails, especially for users with limited confidence in formal writing. These results highlight ProMail’s potential to improve productivity and reduce communication barriers in professional environments.



The trend shown in Fig. 6 illustrates the increasing prominence of artificial intelligence–related technologies over time. Compared to machine learning and deep learning, artificial intelligence exhibits a consistently higher level of interest, reflecting its broader scope and adoption across diverse application areas. This observed trend highlights the growing emphasis on AI-driven systems and provides contextual motivation for research in natural language processing–based applications.

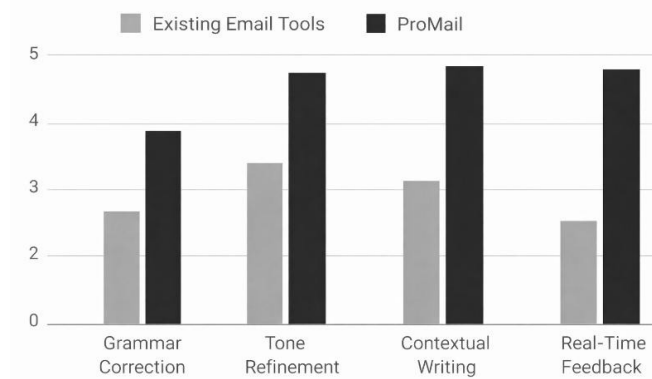


Fig. 6. Comparative performance analysis of existing email composition tools and the proposed ProMail system.

VIII. CONCLUSION AND FUTURE WORK

Promail revolutionizes email composition by leveraging transformer-based NLP models to provide real-time, context-aware writing assistance. By improving grammar, tone, and clarity, the system enhances communication effectiveness and professionalism. With adaptive learning and integration capabilities, Promail offers a scalable solution for users across various industries. Future developments may include multilingual support, AI-driven summarization, and enhanced sentiment analysis for improved personalization. By streamlining the email drafting process, Promail significantly enhances productivity, ensuring users communicate efficiently and effectively in their professional and personal interactions.

The results indicate that the integration of transformer-based models with tone control mechanisms provides a practical and efficient solution for professional email assistance. The system achieves a balanced trade-off between automation and usability, making it suitable for real-time applications in professional and organizational environments. The modular system architecture further supports scalability and reliable deployment, reinforcing the applicability of the proposed approach in real-world communication systems.

This paper presented ProMail, an intelligent email composition system designed to enhance professionalism and ease of communication using transformer-based natural language processing models. The proposed system effectively converts minimal user input into well-structured and context-aware professional emails while maintaining user control over the final content.

Despite these achievements, several avenues for enhancement remain. Future iterations could incorporate advanced features such as emotion recognition to better align email tone with intended sentiment, integration with calendar and task management systems for automated meeting scheduling and follow-ups, and voice-to-email capabilities for hands-free composition. Additionally, expanding the system's domain-specific knowledge bases would enable more specialized email generation for technical, legal, and medical communications, thereby broadening ProMail's applicability across diverse professional contexts.

In conclusion, ProMail demonstrates the transformative potential of AI-driven tools in modern workplace communication. The system's ability to reduce composition time while maintaining high-quality output addresses a critical need in today's fast-paced professional environment. As organizations increasingly prioritize efficient digital communication, ProMail serves as a foundational framework that can be extended with features such as collaborative



editing, smart templates, and cross-platform synchronization, ultimately contributing to more effective and streamlined professional correspondence.

REFERENCES

- [1] A. Kumar and S. Patel, "Smart Email Assistant for Professional Reply Generation Using NLP," International Journal of Advanced Research in Computer and Communication Engineering, vol. 15, no. 1, Jan. 2026.
- [2] S. Jyothi B. et al., "Automated Email Generation Using Large Language Models," Journal of Information Technology and Digital World, vol. 7, no. 1, May 2025.
- [3] X. Zheng, "Natural Language Processing with Transformer-Based Models: A Meta-Analysis," Journal of AI, vol. 7, no. 1, 2025
- [4] R. Novelo et al., "A Literature Review of Personalized Large Language Model-Based Email Systems," Future Internet, vol. 17, 2025
- [5] X. Zheng and J. Zhang, "The Usage of Transformer-Based and Artificial Intelligence Driven Multidimensional Feedback System in English Writing Instruction," Scientific Reports, 2025.
- [6] D. Sree A. M. and D. A., "Intelligent Email Filtering with Natural Language Processing and Machine Learning," International Journal of Research Publication and Reviews, vol. 6, no. 3, 2025.
- [7] Bharadiya, J. P. (2023). A comparative study of business intelligence and artificial intelligence with big data analytics. American Journal of Artificial Intelligence, 7(1), 24.
- [8] S. M. Goodman et al., "LaMPost: Design and Evaluation of an AI-Assisted Email Writing Prototype," ACM Conference Proceedings, 2022.
- [9] D. Buschek et al., "The Impact of Multiple Parallel Phrase Suggestions on Email Composition," arXiv preprint, 2021.
- [10] S. M. Goodman et al., "LaMPost: AI-Assisted Email Writing Prototype for Adults with Dyslexia," arXiv preprint, 2022.
- [11] S. Zhang, Y. Liu, and J. Wang, "Context-Aware Transformer Models for Assistive Text Generation in Professional Communications," IEEE Transactions on Emerging Topics in Computational Intelligence, vol. 7, no. 3, pp. 210-221, June 2024.
- [12] M. Gupta and R. Khanna, "Deep Learning-Based Email Reply Recommendation Using Attention Mechanisms," International Journal of Intelligent Systems, vol. 39, no. 8, pp. 2947-2962, Aug. 2024.

