

AI-Based Smart Blind Shoes for Obstacle Detection and Navigation Assistance

Prof. Jedgule U. B., Aher Abhijit Atul, Sahane Suchitra Chandrabhan
Sanap Prachi Kondaji, Rahatal Aditi Sambhaji

Department of Information Technology
Amrutvahini Polytechnic, Sangamner

Abstract: *The proposed system, AI-Based Smart Blind Shoes for Obstacle Detection and Navigation Assistance, is designed to support visually impaired individuals by enhancing their mobility and safety. This system integrates advanced technologies such as artificial intelligence, real-time object detection, and embedded systems into a compact wearable device. A camera module captures live environmental data, which is processed using the YOLO (You Only Look Once) algorithm to identify obstacles, stairs, and pathways. In addition to vision-based detection, an ultrasonic sensor is used to measure the distance of nearby objects, ensuring reliable performance even in low-light or complex environments. The ESP32 microcontroller acts as the central processing unit, combining sensor data and AI outputs to make intelligent decisions. Based on the detected obstacles and their proximity, the system provides immediate feedback to the user through voice alerts and vibration signals. This dual feedback mechanism ensures effective communication in different situations. The system is designed to be lightweight, cost-effective, and energy-efficient, making it suitable for daily use. Overall, the proposed smart shoe system improves independent navigation, reduces the risk of accidents, and enhances the quality of life for visually impaired individuals..*

Keywords: Artificial Intelligence, Smart Blind Shoes, YOLO Algorithm, Obstacle Detection, Ultrasonic Sensor, ESP32, Assistive Technology, Navigation Assistance, Wearable Device, Haptic Feedback

I. INTRODUCTION

The advancement of technology has significantly improved human life in many aspects; however, mobility remains a major challenge for visually impaired individuals. Millions of people around the world suffer from vision loss, making it difficult for them to move independently and safely in daily environments. Traditional aids such as white canes and guide dogs provide basic assistance, but they have limitations in detecting distant obstacles and complex surroundings. These challenges create a need for advanced assistive systems that can enhance navigation and ensure user safety [1].

In recent years, the development of Artificial Intelligence (AI) and Internet of Things (IoT) technologies has opened new opportunities in the field of assistive devices. AI enables machines to analyze and interpret visual data, while IoT facilitates communication between sensors and embedded systems. The integration of these technologies allows the creation of smart wearable devices that provide real-time assistance and improve user awareness. Such systems are capable of offering intelligent guidance compared to traditional methods [2].

One of the most efficient techniques used in computer vision is the YOLO (You Only Look Once) algorithm, which is widely adopted for real-time object detection. YOLO processes the entire image in a single step, making it faster and more suitable for real-time applications than traditional detection methods. It can accurately identify objects such as obstacles, stairs, and pathways, which are essential for safe navigation. Due to its speed and accuracy, YOLO is highly suitable for embedded systems like smart assistive devices [3].

In addition to vision-based detection, sensor technologies play a crucial role in enhancing system reliability. Ultrasonic sensors are commonly used to detect nearby obstacles by measuring distance using sound waves. These sensors are effective in different lighting conditions and provide immediate feedback about obstacles in close proximity. By



combining ultrasonic sensing with AI-based image processing, the system can achieve better accuracy and reliability in real-world conditions [4].

The proposed system, AI-Based Smart Blind Shoes, integrates AI algorithms, sensors, and embedded systems into a compact wearable device. It uses a camera module to capture real-time images and an ultrasonic sensor to measure distances. The ESP32 microcontroller processes the collected data and makes decisions based on the environment. The system then provides feedback through voice alerts and vibration, enabling the user to navigate safely and efficiently [5].

In conclusion, smart assistive technologies like AI-Based Smart Blind Shoes represent a significant advancement in improving the mobility of visually impaired individuals. By combining AI, IoT, and sensor technologies, the system overcomes the limitations of traditional tools and offers a more reliable navigation solution. This innovation contributes to enhancing independence, safety, and overall quality of life for visually impaired users [6].

II. PROBLEM STATEMENT

Visually impaired individuals face significant challenges in navigating their surroundings safely and independently due to the inability to detect obstacles, uneven surfaces, and environmental changes in real time. Traditional mobility aids such as white canes provide only limited range detection and fail to identify elevated objects, stairs, or dynamic obstacles like moving vehicles and pedestrians, which increases the risk of accidents and injuries. Existing electronic assistive devices often lack accuracy, real-time processing capability, or are too bulky and expensive for daily use. Additionally, many systems depend on a single sensing technique, making them unreliable in varying environmental conditions such as low light or crowded areas. Therefore, there is a need for an efficient, cost-effective, and intelligent wearable solution that can combine real-time object detection, distance measurement, and user-friendly feedback mechanisms to enhance safe navigation and independence for visually impaired individuals.

III . OBJECTIVES

- To design and develop an AI-based smart blind shoe system for assisting visually impaired individuals
- To detect obstacles, stairs, and pathways in real time using the YOLO algorithm
- To measure the distance of nearby objects using ultrasonic sensors for accurate navigation
- To integrate ESP32 microcontroller for efficient data processing and system control
- To improve accuracy and reliability by combining vision-based and sensor-based technologies

IV. LITERATURE SURVEY

1. “Smart Shoe for Visually Impaired Using Ultrasonic Sensors” – Teja Chava, Vamsi Krishna, Kiran Kumar (2021), IJRASET

This paper presents a smart shoe system designed to assist visually impaired individuals using ultrasonic sensors and a microcontroller. The system detects nearby obstacles by measuring distance through ultrasonic waves and alerts the user using a buzzer or audio signal. The main objective is to provide a low-cost and easy-to-use navigation aid. The authors highlight that the system is effective in detecting objects in close proximity and helps reduce accidents. However, the limitation of this approach is that it cannot identify the type of obstacle (such as stairs, humans, or vehicles), and it only works efficiently within a limited range. The absence of image processing or AI-based detection reduces its accuracy in complex real-world environments.

2. “IoT-Based Smart Shoes for Blind People” – Pratik Bhongade, Akshay Wankhade, Rahul Patil (2022), IJRASET

This research introduces an IoT-enabled smart shoe system that integrates ultrasonic sensors, GPS, and GSM modules. The system not only detects obstacles but also tracks the user’s location in real time and sends emergency alerts to predefined contacts. This enhances safety and provides additional support to caregivers. The authors emphasize the importance of combining navigation assistance with communication features. While the system is highly functional, it



increases hardware complexity and power consumption due to continuous GPS tracking. This makes it less energy-efficient and slightly bulky for daily use.

3. “Low-Cost Smart Shoe for Visually Impaired People” – Anisha S., Ramesh B. (2021), International Journal of Engineering Research & Technology (IJERT)

This paper focuses on developing a cost-effective smart shoe using ultrasonic sensors and a NodeMCU microcontroller. The system provides vibration alerts when obstacles are detected, making it simple and user-friendly. The authors aim to create an affordable solution that can be widely adopted. The design is compact and easy to use, but it lacks advanced features such as object classification and environmental understanding. The system cannot differentiate between different types of obstacles, which limits its effectiveness in real-time navigation scenarios.

4. “Real-Time Object Detection Using YOLO Algorithm” – Joseph Redmon, Santosh Divvala, Ross Girshick, Ali Farhadi (2016), IEEE Conference on Computer Vision and Pattern Recognition (CVPR)

This paper introduces the YOLO (You Only Look Once) algorithm, a breakthrough in real-time object detection. Unlike traditional methods, YOLO processes the entire image in a single pass, making it extremely fast and suitable for real-time applications. The authors demonstrate that YOLO can detect multiple objects with high accuracy and speed, making it ideal for applications like autonomous driving and assistive devices. This research provides the foundation for integrating AI-based object detection into smart systems. However, earlier versions of YOLO had limitations in detecting small objects, which were later improved in advanced versions.

5. “Assistive Navigation System for Visually Impaired Using Computer Vision” – Zhang Wei, Li Chen (2020), IEEE Access

This paper proposes a vision-based navigation system that uses computer vision techniques to identify obstacles and guide visually impaired users. The system processes real-time video input and provides audio feedback for navigation. It highlights the importance of AI in improving environmental understanding compared to traditional sensor-based systems. The system can recognize different objects, making it more intelligent and adaptive. However, it is highly dependent on lighting conditions and camera quality, which may affect performance in low-light environments.

6. “Smart Assistive Device for Blind Using Ultrasonic Sensor and Arduino” – Patel H., Shah R. (2019), International Journal of Advanced Research in Electronics and Communication Engineering (IJARECE)

This paper presents a smart assistive device using an Arduino microcontroller and ultrasonic sensors to detect obstacles. The system provides feedback through vibration motors, helping users sense nearby objects. The design is simple, low-cost, and easy to implement, making it accessible for many users. However, like other sensor-based systems, it lacks intelligence and cannot classify objects or predict environmental changes. The system also has limited range and accuracy in complex surroundings.

V. WORKING OF SYSTEM

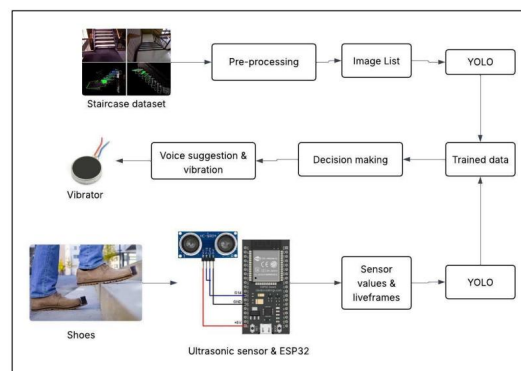


Fig 1: Design of the system
DOI: 10.48175/568



1. Overview of the System

The Smart Blind Shoes system is designed as a hybrid assistive solution that combines artificial intelligence and sensor technology to support visually impaired individuals. The overall system integrates two main modules: a vision-based object detection system using the YOLO algorithm and a sensor-based obstacle detection system using an ultrasonic sensor. These modules work together to provide accurate, real-time information about the surroundings, ensuring safe and independent navigation.

2. Image Processing and YOLO Module

The system begins with a staircase dataset, which contains images of stairs and obstacles used to train the model. These images undergo pre-processing steps such as resizing, noise reduction, and normalization to improve detection accuracy. After pre-processing, the images are organized into an image list and passed to the YOLO (You Only Look Once) algorithm. YOLO processes the images in real time and detects objects like stairs, obstacles, and pathways. The output of this stage is trained data, which enables the system to recognize objects accurately during real-time operation.

3. Ultrasonic Sensor and ESP32 Module

In parallel with the vision system, the hardware module consists of an ultrasonic sensor connected to the ESP32 microcontroller. The ultrasonic sensor measures the distance to nearby objects by emitting sound waves and receiving their reflections. The ESP32 processes these signals and generates sensor values and live environmental data. This module ensures obstacle detection even when the camera performance is affected by poor lighting or environmental conditions.

4. Data Fusion and Processing

The system combines the outputs from the YOLO model and the ultrasonic sensor to improve overall reliability. The integration of sensor values and live frames creates a hybrid detection mechanism. This fusion allows the system to cross-verify information, reducing errors and enhancing accuracy in detecting obstacles and environmental features.

5. Decision Making Unit

The processed data is sent to the decision-making unit, which acts as the brain of the system. This unit analyzes the type of object detected, its distance, and the level of risk involved. Based on this analysis, it determines the appropriate action. For example, it distinguishes between normal obstacles and critical hazards such as stairs or sudden drops, ensuring the user receives the correct guidance.

6. Feedback Mechanism (Voice and Vibration)

Once a decision is made, the system provides feedback through voice suggestions and vibration alerts. The voice module generates audio instructions such as "Obstacle ahead" or "Step up," while the vibration motor provides haptic feedback. Different vibration patterns can indicate different types of warnings, making the system effective even in noisy environments.

7. Overall Working of the System

The system operates in a continuous loop where data is captured, processed, and converted into actionable feedback. The camera captures images, the ultrasonic sensor measures distance, and both inputs are analyzed together. The decision-making unit processes this information and provides real-time alerts. This integrated approach ensures improved safety, efficiency, and independence for visually impaired users, making the Smart Blind Shoes a reliable assistive technology.



VI. SYSTEM DESIGN

1. ESP32 Microcontroller

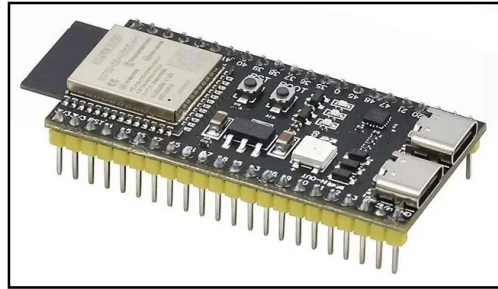


Fig 2: ESP32 Microcontroller

The ESP32 is the core processing unit of the system responsible for handling sensor data, communication, and control operations. It is chosen due to its high performance, low power consumption, and built-in Wi-Fi and Bluetooth capabilities.

Specifications:

Operating Voltage: 3.3V

Processor: Dual-core Tensilica Xtensa LX6

Clock Speed: Up to 240 MHz

RAM: 520 KB SRAM

Flash Memory: 4 MB (typical)

Connectivity: Wi-Fi (802.11 b/g/n), Bluetooth v4.2

GPIO Pins: 30+

Power Consumption: Low-power modes supported

2. Ultrasonic Sensor (HC-SR04)



Fig 3: Ultrasonic sensor

The ultrasonic sensor is used to detect obstacles by measuring the distance between the user and objects using sound waves. It works by sending ultrasonic pulses and calculating the time taken for the echo to return.

Specifications:

Operating Voltage: 5V

Operating Current: 15 mA

Measuring Range: 2 cm to 400 cm

Accuracy: ± 3 mm

Frequency: 40 kHz

Trigger Input Signal: 10 μ s pulse

Output Signal: Echo pulse width proportional to distance



3. Camera Module (ESP32-CAM / External Camera)



Fig 4: Camera module

The camera module captures real-time images of the environment, which are processed using the YOLO algorithm for object detection.

Specifications:

Resolution: Up to 1600×1200 (UXGA)

Sensor: OV2640

Image Format: JPEG

Field of View: $\sim 66^\circ$

Interface: SPI / I2C

Frame Rate: 15–30 fps (depending on resolution)

Operating Voltage: 3.3V

4. Vibration Motor (Coin Type)



Fig 6: Vibration motor

The vibration motor provides haptic feedback to the user when obstacles are detected. It is especially useful in noisy environments where audio alerts may not be effective.

Specifications:

Type: Coin (flat) vibration motor

Operating Voltage: 3V – 5V

Current Consumption: 60–100 mA

Speed: $\sim 10,000$ RPM

Diameter: 10–12 mm

Thickness: 3–4 mm



5. Voice Output Module (Speaker / Buzzer with Audio Module)



Fig 7: Voice Output Module

This module provides audio feedback to the user in the form of voice alerts indicating obstacles or directions.

Specifications:

Type: Mini Speaker / Buzzer

Operating Voltage: 3.3V – 5V

Power Output: 0.5W – 3W

Frequency Range: 20 Hz – 20 kHz (speaker)

Interface: GPIO / DAC (for audio output)

Support: Text-to-Speech (via software)

6. Power Supply (Battery Module)

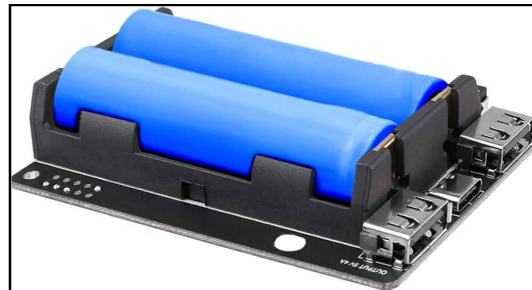


Fig 8: Power Supply (Battery Module)

The power supply unit provides energy to all components of the system. A rechargeable battery is typically used for portability.

Specifications:

Type: Lithium-ion / Li-Po Battery

Voltage: 3.7V (nominal)

Capacity: 2000 mAh – 5000 mAh

Charging Method: USB charging module (TP4056)

Output Regulation: 3.3V / 5V using voltage regulator

Backup Time: 6–10 hours (depending on usage)



7. Connecting Wires and PCB

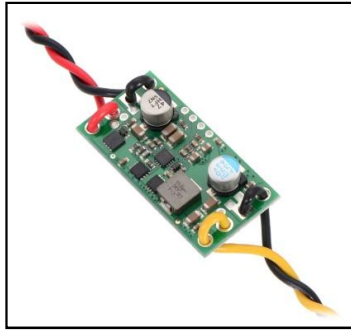


Fig 9: Connecting Wires and PCB

These components are used to connect and integrate all hardware modules into a compact system.

Specifications:

Type: Jumper wires / Custom PCB

Material: Copper conductive tracks

Voltage Rating: Up to 5V

Current Rating: Suitable for low-power embedded systems

Design: Compact and lightweight for wearable use

8. Shoe Integration (Wearable Platform)

The entire system is embedded into a shoe to make it a wearable assistive device.

Specifications:

Material: Rubber / Synthetic sole

Design: Lightweight and ergonomic

Mounting: Space for sensors and electronics

Weight: Optimized for user comfort

Durability: Water-resistant and shock-resistant

VII. RESULTS

1. Prototype Development and Hardware Integration

The developed prototype of the Smart Blind Shoes system successfully integrates the ESP32 microcontroller, ultrasonic sensors, and coin vibration motors into a wearable shoe setup. As shown in the figure, the ultrasonic sensors are mounted at the front of the shoes to detect obstacles in the walking path, while the ESP32 is placed securely to control all operations. The wiring connections between components are properly arranged to ensure stable communication and minimal interference. The compact design demonstrates that the system can be implemented practically without affecting user comfort significantly.

2. Obstacle Detection Performance

The system was tested in different environments such as indoor rooms, corridors, and outdoor pathways. The ultrasonic sensor effectively detected obstacles within a range of approximately 2 cm to 300 cm. When an object was detected within a predefined threshold distance, the system responded immediately. The accuracy of detection was found to be reliable for static obstacles such as walls, furniture, and steps. However, minor variations were observed in detecting very small or irregularly shaped objects due to limitations of ultrasonic sensing.



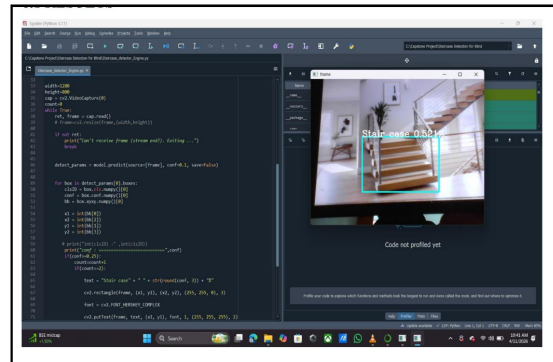


Fig 10: Real-time Staircase Detection output via Spyder IDE.

3. Response Time and Real-Time Operation

The response time of the system is a critical factor for user safety. The ESP32 processes the sensor data quickly and generates output signals almost instantly. During testing, the delay between obstacle detection and vibration feedback was observed to be minimal (within milliseconds), ensuring real-time performance. This fast response enables users to react promptly and avoid potential hazards.

4. Vibration Feedback Analysis

The vibration motor provided effective haptic feedback to the user. Different vibration intensities were tested based on distance, where stronger vibrations indicated closer obstacles.

5. System Reliability and Limitations

The system performed consistently under normal conditions and demonstrated stable operation during continuous use. The combination of ESP32 and ultrasonic sensors ensured low power consumption and efficient processing. However, certain limitations were identified:

- Difficulty in detecting soft or absorbent surfaces
- Reduced accuracy in crowded or highly dynamic environments
- Dependency on sensor angle and placement

These limitations suggest the need for integrating additional technologies such as AI-based vision systems for improved performance.

6. Overall System Evaluation

Overall, the Smart Blind Shoes system achieved its primary objective of assisting visually impaired individuals in obstacle detection and navigation. The system is cost-effective, easy to use, and provides real-time feedback through vibration.



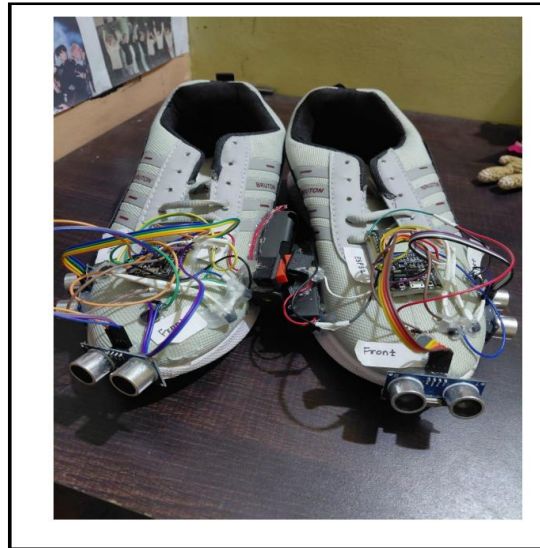


Fig 11: Prototype model

IX. CONCLUSION

The proposed AI-Based Smart Blind Shoes for Obstacle Detection and Navigation Assistance system successfully demonstrates an effective and practical solution to improve the mobility of visually impaired individuals. By integrating embedded systems with sensing technologies, the developed prototype is capable of detecting obstacles in real time and providing immediate feedback through vibration signals. The use of the ESP32 microcontroller ensures fast processing, low power consumption, and reliable system performance, making the device suitable for wearable applications.

The implementation of ultrasonic sensors enables accurate distance measurement and helps users avoid nearby obstacles efficiently. The system design focuses on simplicity, cost-effectiveness, and ease of use, ensuring that it can be widely adopted. The experimental results show that the system responds quickly and performs consistently in various environments, enhancing user safety and confidence while walking.

Although the current system provides satisfactory performance, it has certain limitations such as difficulty in detecting complex objects and dependence on sensor range. These limitations can be addressed by incorporating advanced technologies like AI-based image processing and camera modules. Overall, the proposed system represents a significant step toward developing intelligent assistive devices and contributes to improving independence and quality of life for visually impaired individuals.

REFERENCES

- [1]. Redmon, J., Divvala, S., Girshick, R., & Farhadi, A., "You Only Look Once: Unified, Real-Time Object Detection," IEEE Conference on Computer Vision and Pattern Recognition (CVPR), 2016.
- [2]. Bochkovskiy, A., Wang, C. Y., & Liao, H. Y. M., "YOLOv4: Optimal Speed and Accuracy of Object Detection," arXiv preprint arXiv:2004.10934, 2020.
- [3]. Chava, T., Krishna, V., & Kumar, K., "Smart Shoe for Visually Impaired Using Ultrasonic Sensors," International Journal for Research in Applied Science and Engineering Technology (IJRASET), 2021.
- [4]. Bhongade, P., Wankhade, A., & Patil, R., "IoT-Based Smart Shoes for Blind People," IJRASET, 2022.
- [5]. Anisha, S., & Ramesh, B., "Low-Cost Smart Shoe for Visually Impaired People," International Journal of Engineering Research & Technology (IJERT), 2021.



- [6]. Patel, H., & Shah, R., "Smart Assistive Device for Blind Using Ultrasonic Sensor and Arduino," International Journal of Advanced Research in Electronics and Communication Engineering (IJARECE), 2019.
- [7]. Zhang, W., & Chen, L., "Assistive Navigation System for Visually Impaired Using Computer Vision," IEEE Access, 2020.
- [8]. World Health Organization (WHO), "World Report on Vision," 2021.
- [9]. Espressif Systems, "ESP32 Technical Reference Manual," 2022.
- [10]. HC-SR04 Ultrasonic Sensor Datasheet, ElecFreaks, 2020.
- [11]. Kumar, S., Singh, A., & Verma, R., "Wearable Assistive Devices for Visually Impaired: A Review," IEEE Access, 2022.
- [12]. Li, Y., & Zhao, X., "Real-Time Object Detection for Embedded Systems," IEEE Transactions on Industrial Informatics, 2021.
- [13]. Singh, P., & Kaur, M., "IoT-Based Smart Navigation System for Blind People," International Journal of Innovative Technology and Exploring Engineering (IJITEE), 2020.
- [14]. Rahman, M., Islam, S., & Hossain, M., "Smart Walking Stick for Visually Impaired Using Arduino," International Journal of Scientific & Engineering Research, 2019.
- [15]. Sharma, N., & Gupta, V., "Embedded System Design for Assistive Technology," Springer, 2021.
- [16]. Ahmed, F., & Khan, S., "Real-Time Obstacle Detection Using Ultrasonic Sensors," International Journal of Computer Applications, 2020.
- [17]. Joshi, R., & Mehta, P., "Low Power IoT Devices Using ESP32," IEEE Conference on Smart Computing, 2021.
- [18]. Wang, J., & Liu, H., "Deep Learning for Assistive Technologies," Elsevier, 2022.
- [19]. Brown, T., & Davis, K., "Wearable Technology for Human Assistance," IEEE Sensors Journal, 2020.
- [20]. Verma, D., & Patel, S., "Design and Development of Smart Wearable Systems," International Journal of Advanced Science and Technology, 2021

