

# Design and Implementation of Real Time Monitoring of Bridge using Wireless Technology

Tanuja Mahendra Bhaskar, Sakshi Sudam Neharkar, Prof. Dhole G. P.

Sanchi Shivaji Mhaske, Sanika Jivan More

Electronics and Telecommunication Engineering

Jaihind Polytechnic, Kuran, Pune, India

bhaskartanuja2711@gmail.com, neharkarsakshi82@gmail.com, gauridhole2508@gmail.com

sanchimhaske03@gmail.com, moresanika329@gmail.com

**Abstract:** *Bridges are critical components of transportation infrastructure, and their structural safety directly affects public safety and economic activity. Continuous monitoring of bridge health has become essential because conventional manual inspection methods are time-consuming, expensive, and often unable to detect early-stage structural damage. This project presents the design and implementation of a real-time bridge monitoring system using wireless technology, based on an ESP32 microcontroller integrated with multiple sensors to monitor important bridge parameters continuously. The system measures vibration, tilt, load, crack formation, and temperature using dedicated sensors such as MPU6050 accelerometer, HX711 with load cell, vibration sensor, flex sensor, and DS18B20 temperature sensor.*

*These sensor values are processed by the ESP32 and displayed locally on an OLED display while also being transmitted wirelessly to a web server for live monitoring.*

*A built-in web interface provides continuous real-time data updates, maintenance control, and system status visualization. The system classifies bridge conditions into NORMAL, WARNING, CRITICAL, and MAINTENANCE modes depending on threshold values. In abnormal situations, an active buzzer gives an audible alert and detailed notifications are sent through Telegram. The proposed system provides a low-cost, scalable, and efficient solution for structural health monitoring of bridges.*

**Keywords:** Real-Time Monitoring, Bridge Health Monitoring, Wireless Sensor Network, Structural Health Monitoring, Sensors, Microcontroller, Data Transmission, Remote Monitoring, Alert System, IoT

## I. INTRODUCTION

Bridge structures are exposed to continuous environmental stress, traffic loads, temperature variations, vibration, and aging effects. Over time, these factors may lead to structural weaknesses such as cracks, deformation, excessive load stress, and instability. Traditional bridge inspection methods rely heavily on manual surveys, which are periodic and may fail to detect sudden changes in structural behavior. Recent developments in embedded systems and IoT technology have enabled real-time structural health monitoring. By integrating sensors with wireless communication, bridge parameters can be continuously measured and transmitted to remote monitoring stations.

This project uses an ESP32-based wireless bridge monitoring system capable of collecting multiple structural parameters in real time. The system combines sensor data with threshold analysis to detect abnormal structural conditions and generate alerts immediately. Wireless technology eliminates the need for wired supervision, making the system practical for remote bridge locations. The use of a web server and Telegram alert system improves accessibility and early response capability



## **II. LITERATURE REVIEW**

The literature review for the real-time bridge monitoring system using wireless technology focuses on structural health monitoring systems, wireless sensor networks, and smart infrastructure monitoring techniques developed by researchers over the years. Many researchers have worked on bridge health monitoring systems to improve bridge safety, reduce maintenance costs, and provide early warning systems for structural failures.

Structural Health Monitoring (SHM) is an important concept used in modern bridge monitoring systems. SHM systems are used to monitor the condition of structures such as bridges, buildings, dams, and towers using sensors and data acquisition systems. Researchers have found that continuous monitoring is more effective than traditional manual inspection methods because manual inspection is done periodically and may fail to detect small cracks or structural weaknesses at an early stage.

Many studies show that wireless sensor networks (WSN) are very useful for bridge monitoring systems. In earlier days, wired monitoring systems were used, but wired systems were expensive, difficult to install, and required high maintenance. Long cables were needed across the bridge, which increased installation cost and complexity. To solve this problem, researchers introduced wireless sensor networks where sensors communicate wirelessly using technologies such as

## **III. SCOPE OF THE PROJECT**

The scope of this project is to develop a real-time bridge monitoring system using wireless technology to monitor the structural condition of bridges continuously. The system is used to monitor important parameters such as vibration, load, strain, temperature, tilt, and displacement of the bridge structure. Wireless sensor networks are used in this project to collect data from different sensors placed on the bridge and transmit the data to the monitoring station.

The system helps in real-time data monitoring, which allows engineers and authorities to monitor the bridge condition from a remote location. The project reduces the need for manual inspection, which saves time, cost, and human effort. The system includes an alert or warning system that sends notifications when any parameter exceeds the safety limit. This project can be used for highway bridges, railway bridges, pedestrian bridges, and flyovers.

## **IV. METHODOLOGY AND APPROACH**

Problem Identification ,Detect structural issues like cracks, overload, and vibration in bridges. Parameter Selection,Monitor,parameters:,Stress/strain,Vibration,Load,Temperature Sensor Deployment, Install sensors at critical points (pillars, joints, deck).Data Acquisition, Use microcontroller (ESP32/Arduino) to collect sensor data. Wireless Transmission, Send data using Wi-Fi / GSM / LoRa to cloud/server. Data Analysis & Alert, Compare values with thresholds, Generate alerts (buzzer/SMS/app) if abnormal condition occurs, Hardware Approach, Use sensors + ESP32 microcontroller, Provide power supply (battery/solar),Software Approach, Program using Arduino IDE, Process and filter sensor data, Communication Approach, Use IoT protocols (MQTT/HTTP) ,Cloud platforms (Thing Speak, Blynk) Monitoring Approach Real-time dashboard display Automatic warning system

## **V. DETAILS OF DESIGNS, WORKING AND PROCESSES**

### **A. System Architecture and Hardware Design**

The system architecture of a real-time bridge monitoring system using wireless technology is typically organized into four main layers. In the sensing layer, various sensors such as strain gauges, accelerometers, temperature sensors, and crack detection sensors are installed on critical parts of the bridge to continuously measure structural parameters like load, vibration, and environmental conditions. The collected data is sent to the processing layer, where a microcontroller such as ESP32 or Arduino processes and converts the sensor signals into digital form.

This processed data is then transmitted through the communication layer using wireless technologies like Wi-Fi, GSM, Zigbee, or LoRa to a remote server or cloud platform. Finally, in the monitoring and alert layer, the data is displayed on



a web or mobile interface, and alerts such as buzzer alarms or SMS notifications are generated when abnormal conditions are detected, ensuring timely preventive action

**B. Software Architecture and AI Pipeline**

The software architecture of a real-time bridge monitoring system using wireless technology is designed as a layered IoT framework that enables continuous data collection, transmission, processing, and visualization. At the sensor layer, devices such as strain gauges, vibration sensors, temperature sensors, and tilt sensors collect structural data and send it to a microcontroller (e.g., ESP32) for initial processing. This data is then transmitted wirelessly through communication technologies like Wi-Fi, Zigbee, or LoRa using lightweight protocols such as MQTT.

An edge processing unit (such as a Raspberry Pi) may perform local filtering, aggregation, and quick anomaly checks to reduce latency. The processed data is forwarded to the cloud/server layer, where it is stored in databases and analyzed using scalable computing resources. The application layer provides a user-friendly dashboard for real-time monitoring, historical analysis, and alert generation through notifications like SMS or email, enabling engineers to take timely actions.

**C. System Working Flow**

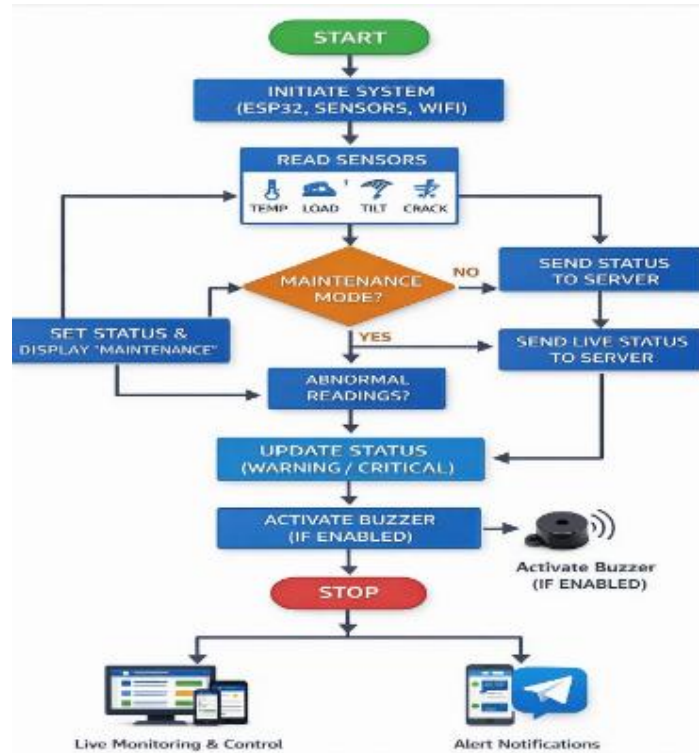


Fig. Working flow of bridge

The figure illustrates the workflow of a real-time bridge monitoring system using wireless technology based on an ESP32 microcontroller. The process begins with system initialization, where the ESP32, sensors, and Wi-Fi module are activated to ensure proper communication and data collection. The system then continuously reads data from various sensors such as temperature, load, tilt, and crack sensors to monitor the structural condition of the bridge. After collecting data, it checks whether the system is in maintenance mode; if not, it sends regular status updates to the server, while in maintenance mode it sends live updates and displays a maintenance status.



The system then analyzes the sensor readings to detect any abnormal conditions, and if such conditions are found, it updates the status as warning or critical. In critical situations, a buzzer is activated to provide an immediate alert. Finally, all data and alerts are transmitted to monitoring devices like computers or mobile phones for real-time observation and quick decision-making, ensuring bridge safety and efficient maintenance.

## **VI. RESULTS AND APPLICATION**

### **A. AI Detection and System Performance**

In a real-time bridge monitoring system, detection is achieved through a network of distributed sensors such as strain gauges, accelerometers, vibration sensors, temperature sensors, and crack detection sensors placed at critical points on the bridge. These sensors continuously collect structural and environmental data and transmit it wirelessly using technologies like ZigBee, LoRa, or Wi-Fi to a central processing unit or cloud server.

Advanced algorithms and AI models analyze this data to detect anomalies such as excessive vibration, unusual strain, crack formation, or structural deformation. Threshold-based alerts and predictive analytics help in early fault detection, ensuring timely maintenance and preventing catastrophic failures

### **B. Applications and Benefits**

Real-time bridge monitoring using wireless technology is widely applied in structural health monitoring, disaster detection, traffic load analysis, and remote supervision of bridge conditions. Sensors installed on the bridge continuously measure parameters such as stress, vibration, and cracks, and transmit data wirelessly to monitoring stations for analysis. This system enables early warning of potential failures, helping authorities take preventive actions and ensure public safety.

The benefits include improved safety through timely detection of faults, reduced maintenance costs by minimizing manual inspections, and real-time data availability for better decision-making. Additionally, wireless systems are easy to install, highly reliable, and can be integrated with IoT and smart city infrastructure, making them an efficient solution for modern bridge management.

## **VII. CONCLUSIONS**

The design and implementation of a real-time bridge monitoring system using wireless technology provide an efficient, reliable, and scalable solution for ensuring structural safety. By integrating sensors (such as strain gauges, vibration sensors, and temperature sensors) with wireless communication modules, the system enables continuous data collection and remote monitoring without the need for extensive wiring. This reduces installation and maintenance costs while improving flexibility.

The use of real-time data analysis allows early detection of structural issues such as cracks, excessive load, or abnormal vibrations, helping authorities take preventive actions before failures occur. Wireless technologies like IoT and cloud platforms further enhance system performance by enabling instant alerts, data storage, and advanced analytics

## **REFERENCES**

- [1]. Akyildiz, I. F., Su, W., Sankarasubramaniam, Y., & Cayirci, E., "Wireless Sensor Networks: A Survey," IEEE Communications Magazine. This paper explains the concept of wireless sensor networks, their architecture, and applications in monitoring systems.
- [2]. Lynch, J. P., and Loh, K. J., "A Summary Review of Wireless Sensors and Sensor Networks for Structural Health Monitoring," Shock and Vibration Digest. This paper describes how wireless sensors are used for structural health monitoring of bridges and buildings.
- [3]. Farrar, C. R., and Worden, K., "An Introduction to Structural Health Monitoring," Philosophical Transactions of the Royal Society. This research paper explains the basics of structural health monitoring and damage detection methods.



- [4]. Arduino Project Handbook by Mark Geddes. This book was referred to for understanding microcontroller programming and sensor interfacing.
- [5]. ESP32 Technical Reference Manual by Espressif Systems. This manual was used for understanding ESP32 microcontroller, Wi-Fi communication, and IoT applications.
- [6]. ZigBee Wireless Networking by Drew Gislason. This book explains ZigBee wireless communication used in wireless sensor networks.
- [7]. Research papers on Bridge Health Monitoring System using IoT and Wireless Sensor Networks from IEEE Xplore Digital Library.
- [8]. International Journal of Civil Engineering and Technology (IJCIET) – Papers related to bridge structural health monitoring systems.
- [9]. Sensors and Actuators Journal – Research articles related to sensors used for structural monitoring.

