

# Deep Fake Detection

**Sagar Manoj Nawle, Amisha Suresh Khadse, Harshali Bandu Jeurkar, Sonali Kamalakar Deulkar**

Shree Sai College of Engineering and Technology, Lonara, Maharashtra

**Abstract:** *With the increasing computational power, the creation of indistinguishable human synthesized videos, known as deepfakes, has become remarkably easy. These realistic face-swapped deepfakes have raised concerns as they can be utilized for malicious purposes such as causing political unrest, fabricating terrorism events, spreading revenge porn, and blackmailing individuals. In this research, we present a novel deep learning-based method that effectively distinguishes AI-generated fake videos from real ones. Our approach focuses specifically on detecting replacement and reenactment deepfakes. We harness the power of Artificial Intelligence (AI) to combat the challenges posed by AI itself. The core of our system lies in a ResNext Convolutional Neural Network, which extracts frame-level features. These features are then used to train a Long Short-Term Memory (LSTM)-based Recurrent Neural Network (RNN) that classifies videos as either manipulated (deepfake) or authentic (real). To ensure real-time applicability and enhance the model's performance on real-world data, we evaluate our method using a large and balanced dataset. This dataset is prepared by blending various available datasets, including Face Forensic++[1], Deepfake Detection Challenge[2], and Celeb-DF[3]. Additionally, we demonstrate how our system achieves competitive results through a simple and robust approach. In summary, our research aims to address the challenges posed by deepfakes by utilizing AI technologies. By leveraging a ResNext CNN and LSTM-based RNN, we successfully detect and classify manipulated videos. Through extensive evaluation on mixed and balanced datasets, we showcase the effectiveness and efficiency of our approach in real-time scenarios*

**Keywords:** deepfakes

## I. INTRODUCTION

The widespread use of social media has been greatly facilitated by the advancement in smartphone cameras and the availability of reliable internet connections, enabling easy creation and sharing of digital videos. Deep learning has gained immense power due to increased processing capabilities, surpassing what was once considered unimaginable. However, this progress has also brought about new challenges. The emergence of deep generative adversarial models capable of modifying audio and video samples has led to the creation of "DeepFake" videos. These videos are often spread through social media platforms, leading to issues such as spamming and the dissemination of false information. The existence of such DeepFake videos can have detrimental effects, causing intimidation and deception. Therefore, it is crucial to develop technologies that can effectively detect and identify these fakes, thereby preventing their spread online. To address this problem, we present a novel deep learning-based technique that successfully distinguishes between AI generated fake videos (DF Videos) and genuine ones. Understanding the workings of the Generative Adversarial Network (GAN) is pivotal in identifying DeepFake videos. GANs use input videos and images of a target person to replace their faces with those of another person (the "source"). Deep adversarial neural networks are trained on face photos and target videos to automatically map faces and facial expressions, forming the foundation of DeepFake creation. With appropriate post-processing, these generated videos can achieve a high level of realism. The GAN replaces the input image in each frame by dividing the video into frames and then reconstructing the video using techniques like autoencoders. Our proposed technique is based on the same underlying process employed by GANs to generate DeepFake videos. We focus on a specific feature of these videos, where face photos synthesized by the DF algorithm undergo an affine warping process to align with the facial features of the source person while maintaining a fixed size. This warping introduces discernible artifacts in the resulting DeepFake video due to resolution discrepancies between the warped face area and the surrounding context. By comparing these created face areas with their



surrounding regions, our technique can identify such artifacts. Furthermore, we capture the temporal inconsistencies between frames introduced by GAN during the video reconstruction process by splitting the video into frames, extracting features, and utilizing a Recurrent Neural Network (RNN) with Long Short-Term Memory (LSTM). To streamline our approach, we directly train the ResNext CNN model to replicate the resolution inconsistencies observed in affine face wrappings.

## II. LITERATURE REVIEW

1. Korshunov, P., & Marcel, S. (2018). DeepFakes: A New Threat to Face Recognition? Assessment and Detection. IEEE International Conference on Biometrics.

It is becoming increasingly easy to automatically replace a face of one person in a video with the face of another person by using a pre-trained generative adversarial network (GAN). Recent public scandals, e.g., the faces of celebrities being swapped onto pornographic videos, call for automated ways to detect these Deepfake videos. To help developing such methods, in this paper, we present the first publicly available set of Deepfake videos generated from videos of VidTIMIT database. We used open source software based on GANs to create the Deepfakes, and we emphasize that training and blending parameters can significantly impact the quality of the resulted videos. To demonstrate this impact, we generated videos with low and high visual quality (320 videos each) using differently tuned parameter sets. We showed that the state of the art face recognition systems based on VGG and Facenet neural networks are vulnerable to Deepfake videos, with 85.62% and 95.00% false acceptance rates respectively, which means methods for detecting Deepfake videos are necessary. By considering several baseline approaches, we found that audio-visual approach based on lip-sync inconsistency detection was not able to distinguish Deepfake videos. The best performing method, which is based on visual quality metrics and is often used in presentation attack detection domain, resulted in 8.97% equal error rate on high quality Deepfakes. Our experiments demonstrate that GAN-generated Deepfake videos are challenging for both face recognition systems and existing detection methods, and the further development of face swapping technology will make it even more so.

2. Tolosana, R., Vera-Rodriguez, R., Fierrez, J., Morales, A., & Ortega-Garcia, J. (2020). DeepFakes and Beyond: A Survey of Face Manipulation and Fake Detection. Information Fusion, 64, 131-148.

The free access to large-scale public databases, together with the fast progress of deep learning techniques, in particular Generative Adversarial Networks, have led to the generation of very realistic fake content with its corresponding implications towards society in this era of fake news. This survey provides a thorough review of techniques for manipulating face images including DeepFake methods, and methods to detect such manipulations. In particular, four types of facial manipulation are reviewed: i) entire face synthesis, ii) identity swap (DeepFakes), iii) attribute manipulation, and iv) expression swap. For each manipulation group, we provide details regarding manipulation techniques, existing public databases, and key benchmarks for technology evaluation of fake detection methods, including a summary of results from those evaluations. Among all the aspects discussed in the survey, we pay special attention to the latest generation of DeepFakes, highlighting its improvements and challenges for fake detection.

In addition to the survey information, we also discuss open issues and future trends that should be considered to advance in the field

3. Li, Y., & Lyu, S. (2019). Exposing DeepFake Videos by Detecting Face Warping Artifacts. IEEE Conference on Computer Vision and Pattern Recognition Workshops (CVPRW).

In this work, we describe a new deep learning based method that can effectively distinguish AI-generated fake videos (referred to as DeepFake videos hereafter) from real videos. Our method is based on the observations that current DeepFake algorithm can only generate images of limited resolutions, which need to be further warped to match the original faces in the source video. Such transforms leave distinctive artifacts in the resulting DeepFake videos, and we show that they can be effectively captured by convolutional neural networks (CNNs). Compared to previous methods which use a large amount of real and DeepFake generated images to train CNN classifier, our method does not need DeepFake generated images as negative training examples since we target the artifacts in affine face warping as the



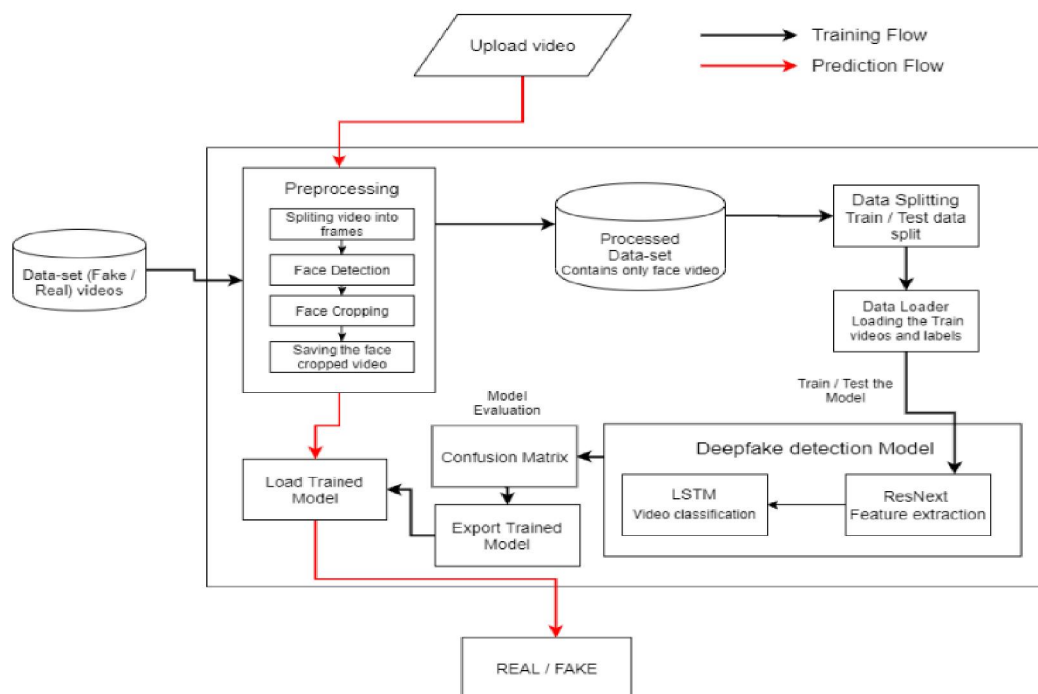
distinctive feature to distinguish real and fake images. The advantages of our method are two-fold: (1) Such artifacts can be simulated directly using simple image processing operations on a image to make it as negative example. Since training a DeepFake model to generate negative examples is time-consuming and resource-demanding, our method saves a plenty of time and resources in training data collection; (2) Since such artifacts are general existed in DeepFake videos from different sources, our method is more robust compared to others. Our method is evaluated on two sets of DeepFake video datasets for its effectiveness in practice.

4. Agarwal, S., Farid, H., Gu, Y., He, M., Nagano, K., & Li, H. (2019). Protecting World Leaders Against Deep Fakes. IEEE Conference on Computer Vision and Pattern Recognition (CVPR)

The creation of sophisticated fake videos has been largely relegated to Hollywood studios or state actors. Recent advances in deep learning, however, have made it significantly easier to create sophisticated and compelling fake videos. With relatively modest amounts of data and computing power, the average person can, for example, create a video of a world leader confessing to illegal activity leading to a constitutional crisis, a military leader saying something racially insensitive leading to civil unrest in an area of military activity, or a corporate titan claiming that their profits are weak leading to global stock manipulation. These so called deep fakes pose a significant threat to our democracy, national security, and society. To contend with this growing threat, we describe a forensic technique that models facial expressions and movements that typify an individual's speaking pattern. Although not visually apparent, these correlations are often violated by the nature of how deep-fake videos are created and can, therefore, be used for authentication.

### III. MATERIALS AND METHODOLOGY

#### 1. Proposed architecture



Explanation of System Architecture:

Module 1: Data-set Gathering: To create an efficient real-time prediction model, we gathered data from FaceForensic++



(FF), Deepfake Detection Challenge (DFDC), and Celeb-DF datasets. We combined these datasets with our own collected

data, ensuring a balanced mix of 50% real and 50% fake videos. Preprocessing involved removing audio-altered videos from the DFDC dataset. Our final dataset comprised 81 real and 82 fake videos, totaling 163 video.

Module 2: Pre-Processing: In the pre-processing module, videos undergo various steps to remove noise and extract the required content, specifically the face. The initial step involves splitting the videos into frames. Each frame is then analyzed

to detect and crop the face. The resulting cropped frames are recombined to form new videos, containing only the face regions. Frames without detected faces are excluded during pre-processing

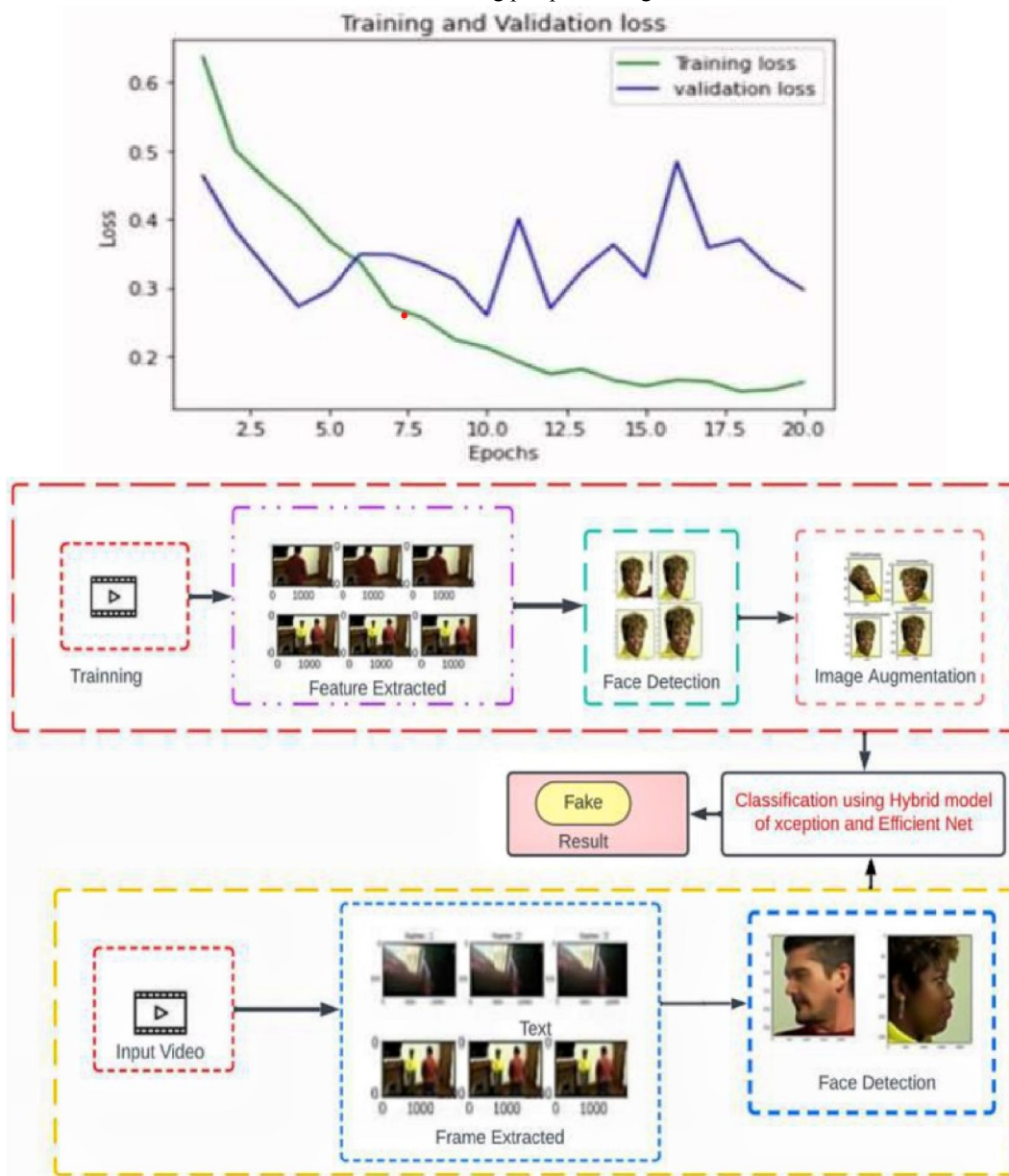


Fig.2 Data preprocessing





To ensure uniformity in the number of frames, a threshold value is determined based on the mean frame count of each video.

This threshold value is chosen considering computational limitations, such as the GPU's processing power. For instance, a 10-second video at 30 frames per second (fps) would have 300 frames, which can be computationally challenging to process simultaneously. Thus, a threshold of 150 frames is selected based on the available GPU computational power. When saving frames to the new dataset, only the first 150 frames of each video are retained. The sequential order of frames is maintained to demonstrate the proper utilization of Long Short-Term Memory (LSTM). The newly created videos are saved at a frame rate of 30 fps and a resolution of 112 x 112 pixels.

**Module 3: Data-set split:** The dataset is divided into a train and test dataset, with a ratio of 70% train videos and 30% test videos. The split is balanced, ensuring an equal distribution of 50% real and 50% fake videos in both the train and test sets.

**Module 4: Model Architecture:** Our model architecture combines both CNN and RNN components. We utilize a pre-trained ResNext CNN model for feature extraction at the frame level. These extracted features are then fed into an LSTM network to classify the videos as either deepfake or pristine. During the training process, the labels of the videos from the training split are loaded using a Data Loader and fitted into the model.

**ResNext:** To avoid starting from scratch, we leverage a pre-trained ResNext model for feature extraction. ResNext is a Residual CNN network specifically optimized for achieving high performance in deeper neural networks. For our experiments, we utilize the resnext50\_32x4d model, which consists of 50 layers and dimensions of 32 x 4.

Next, we fine-tune the network by adding additional necessary layers and selecting an appropriate learning rate to ensure proper convergence of the model's gradient descent. The 2048-dimensional feature vectors obtained from the last pooling layers of ResNext serve as the input for the sequential LSTM component.

**LSTM for Sequence Processing:** For sequence processing, the 2048-dimensional feature vectors are fed into a single LSTM layer. The LSTM layer has 2048 latent dimensions and 2048 hidden layers, with a dropout probability of 0.4, which aids in achieving our objective. The purpose of using LSTM is to process the frames in a sequential manner, allowing for temporal analysis by comparing the frame at time 't' with the frame 't-n' (where 'n' represents the number of frames before 't').

The model also incorporates the Leaky ReLU activation function. A linear layer with 2048 input features and 2 output features is employed to enable the model to learn the average correlation between the input and output. To obtain an output size in the form of H x W (height x width), an adaptive average pooling layer with an output parameter of 1 is included.

Sequential layer is used for sequential processing of frames, and a batch size of 4 is employed for batch training. Finally, a SoftMax layer is utilized to obtain the model's confidence during prediction.

For the user interface, we have developed it using the Django framework. Django offers scalability for the application in the future. The initial page of the user interface, index.html, includes a tab for browsing and uploading videos. The uploaded video is then passed to the model, which makes predictions. The model returns the output indicating whether the video is real or fake, along with the confidence of the model. This output is rendered on the predict.html page, overlaying the results on the playing video.

## **V. ALGORITHM: RENEXT**

### **CNN:**

ResNeXt is a deep learning architecture that is based on residual neural networks (ResNet). It is designed to improve the representational power of the network by using a modular and scalable structure. While ResNeXt itself is not specifically designed for deepfake detection, it can be used as a backbone network in a deepfake detection system to extract meaningful features from the input data. ResNext introduces a concept called a "cardinality" to ResNet architectures. Cardinality refers to the number of parallel paths within each block of the network. By increasing the cardinality, ResNext enables the network to capture more diverse and complementary features, leading to improved performance.



Here's a high-level overview of how ResNext can be used in deepfake detection:

1. Input data preprocessing: The input data, such as images or video frames, undergoes preprocessing steps, which may include resizing, cropping, and normalization, to ensure consistency and facilitate efficient processing.
2. ResNext architecture: The ResNext network is constructed as the backbone of the deepfake detection system. It typically consists of multiple blocks or modules, with each block containing parallel pathways. Each pathway performs convolutional operations to extract features from the input data.
3. Feature extraction: The input data is passed through the ResNeXt network, and at each block, features are extracted using the parallel pathways. These pathways capture different aspects of the input data, allowing the network to learn diverse representations.
4. Classification: The extracted features are then fed into subsequent layers, such as fully connected layers or classifiers, to make predictions regarding the authenticity of the input data. These layers can be trained using labeled data to learn to distinguish between real and fake content.
5. Training and optimization: The entire deepfake detection system, including the ResNeXt backbone, is trained using a large dataset of labeled real and deepfake media. During training, the network's parameters are adjusted iteratively to minimize the difference between predicted labels and ground truth labels. This is typically done using optimization techniques like gradient descent.
6. Evaluation and deployment: The trained deepfake detection system, with the ResNeXt backbone, is evaluated on separate validation and test datasets to assess its performance in accurately detecting deepfakes. Once the system achieves satisfactory performance, it can be deployed for real-world applications, where it takes input data and provides predictions on whether it is real or manipulated. It's important to note that while ResNeXt can be effective for feature extraction in deepfake detection, the overall system's performance may also depend on other factors such as the choice of datasets, data augmentation techniques, and the specific training and evaluation methodologies employed.

## **LSTM**

Deepfake detection using LSTM (Long Short-Term Memory) networks is an approach that leverages the sequential nature of deepfake videos or temporal information in image sequences to identify inconsistencies or anomalies. LSTMs are a type of recurrent neural network (RNN) that can effectively model long-term dependencies in sequential data.

Here is a general overview of how LSTM networks can be used for deepfake detection:

1. Dataset preparation: A dataset of labeled deepfake videos is collected, along with a corresponding set of real videos for comparison. The videos can be divided into frames, and temporal information can be extracted by considering consecutive frames.
2. Preprocessing: The video frames are preprocessed, which may involve resizing, normalization, and possibly optical flow calculation between consecutive frames to capture motion information.
3. LSTM architecture: The LSTM network is designed as the backbone of the deepfake detection system. The network takes input sequences of frames or feature representations extracted from the frames.
4. Feature extraction: The LSTM network processes the input sequences, capturing temporal dependencies and patterns present in the videos. The LSTM's memory cells allow it to remember relevant information from earlier frames while considering the current frame.
5. Classification: The output of the LSTM network is fed into a classification layer, such as a fully connected layer, which predicts whether the input video is real or a deepfake. The classification layer is typically trained using labeled data and optimization techniques like gradient descent.
6. Training and optimization: The LSTM network is trained using the collected dataset, with the goal of minimizing the difference between predicted labels and ground truth labels. The network's parameters are adjusted iteratively using backpropagation through time (BPTT) to update the weights and optimize the model's performance.
7. Evaluation and deployment: The trained LSTM-based deepfake detection system is evaluated on separate validation and test datasets to assess its performance in correctly identifying deepfakes. Once the system achieves satisfactory performance, it can be deployed for real-world deepfake detection tasks.



It's important to note that the effectiveness of LSTM-based deepfake detection depends on various factors, including the quality and diversity of the training dataset, the choice of network architecture, the preprocessing techniques applied, and the specific training and evaluation methodologies used. Additionally, combining LSTM with other techniques, such as image-based features or ensemble methods, may further enhance the detection performance.

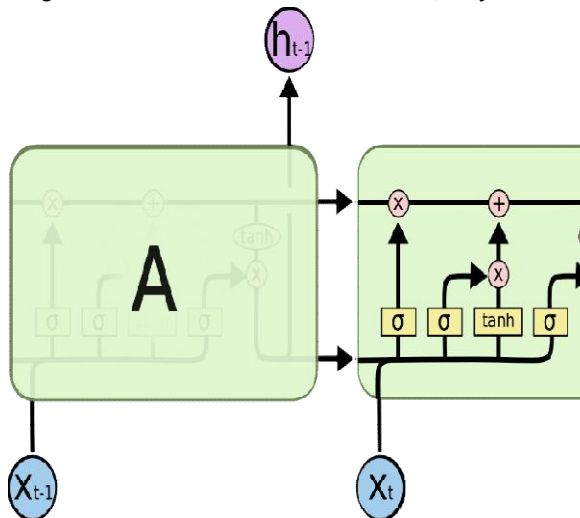


Fig 4: LSTM Cell

## VI RESULT

Training and Validation Loss:



Fig 5: Training and validation loss



### Training and Validation Accuracy

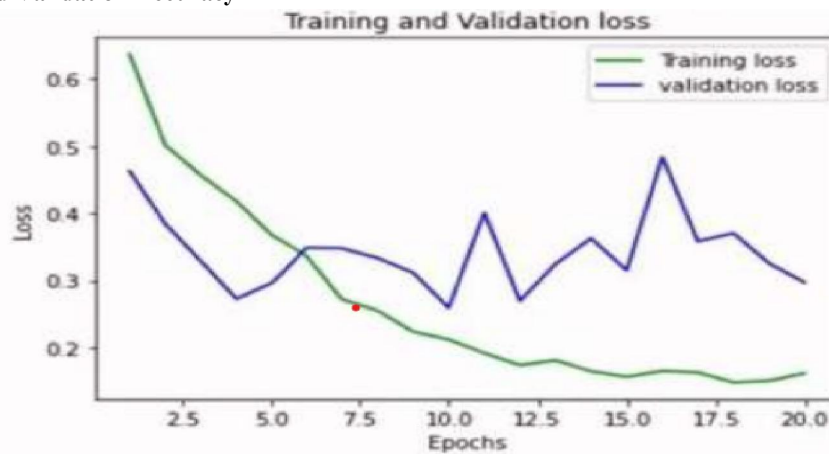


Fig 5: Training and validation loss

### Confusion Matrix:



Fig 7: Confusion Matrix

### Trained Model Results

ModelName	Dataset	No.of videos	Sequence length	Accuracy
model_90_acc_20_frames_FF_data	DeepFakeDetection Challenge	100	20	90.95477
model_95_acc_40_frames_FF_data	DeepFakeDetection Challenge	100	40	95.22613
model_97_acc_60_frames_FF_data	DeepFakeDetection Challenge	100	60	97.48743
model_97_acc_80_frames_FF_data	DeepFakeDetection Challenge	100	80	97.73366
model_97_acc	DeepFakeDetection Challenge	100	100	97.76180

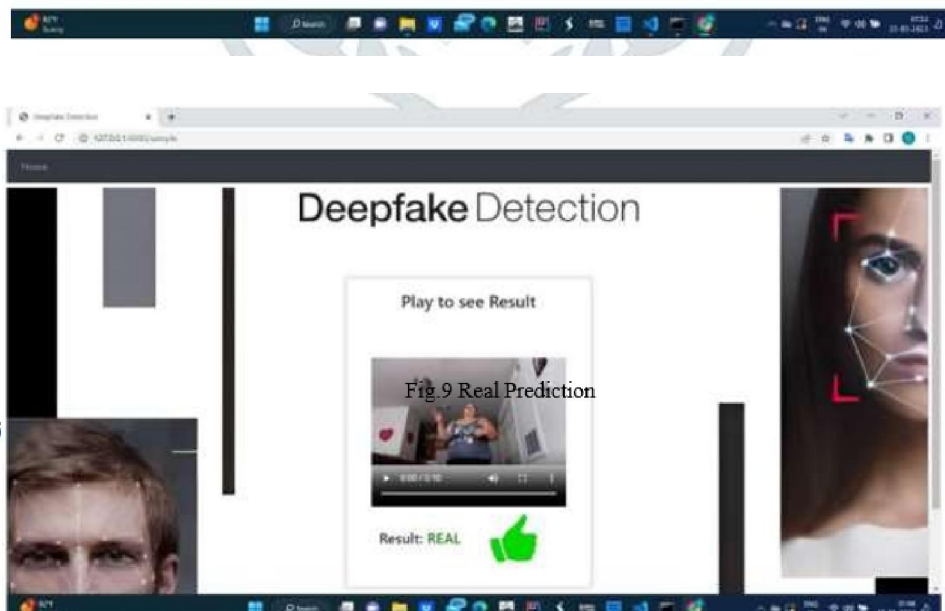




_100_frames_FF_data				
model_87_acc _20_frames_final_data	OurDataset	163	20	87.79160
model_84_acc _10_frames_final_data	OurDataset	163	10	84.21461
model_89_acc _40_frames_final_data	OurDataset	163	40	89.34681

Table 1.Trained model results

## VII. OUTPUT



### VIII. CONCLUSION

We present a novel solution that utilizes a neural network architecture for the classification of videos into deepfakes or real, providing a comprehensive measure of confidence in the model's predictions. Our approach stands out for its efficiency, as it achieves accurate results by analyzing only one second of video footage, corresponding to a frame rate of 10 frames per second. To construct the model, we leverage the power of a pre-trained ResNext CNN, which excels at extracting detailed features at the frame level. Furthermore, we incorporate an LSTM component that performs sequential analysis, enabling the identification of temporal changes between consecutive frames. Notably, our model is designed to handle video sequences of varying lengths, including options such as 10, 20, 40, 60, 80, and 100 frames. By considering a diverse range of frame sequences, our solution caters to different video contexts and offers enhanced flexibility in deepfake detection.

### REFERENCES

- [1]. Korshunov, P., & Marcel, S. (2018). DeepFakes: A New Threat to Face Recognition? Assessment and Detection. IEEE International Conference on Biometrics.
- [2]. Tolosana, R., Vera-Rodriguez, R., Fierrez, J., Morales, A., & Ortega-Garcia, J. (2020). DeepFakes and Beyond: A Survey of Face Manipulation and Fake Detection. *Information Fusion*, 64, 131-148.
- [3]. Li, Y., & Lyu, S. (2019). Exposing DeepFake Videos by Detecting Face Warping Artifacts. *IEEE Conference on Computer Vision and Pattern Recognition Workshops (CVPRW)*.
- [4]. Agarwal, S., Farid, H., Gu, Y., He, M., Nagano, K., & Li, H. (2019). Protecting World Leaders Against Deep Fakes. *IEEE Conference on Computer Vision and Pattern Recognition (CVPR)*.
- [5]. Lowlesh Yadav and Asha Ambhaikar, "IOHT based Tele-Healthcare Support System for Feasibility and performance analysis," *Journal of Electrical Systems*, vol. 20, no. 3s, pp. 844–850, Apr. 2024, doi: 10.52783/jes.1382.
- [6]. L. Yadav and A. Ambhaikar, "Feasibility and Deployment Challenges of Data Analysis in Tele-Healthcare System," 2023 International Conference on Artificial Intelligence for Innovations in Healthcare Industries (ICAIIHI), Raipur, India, 2023, pp. 1-5, doi: 10.1109/ICAIIHI57871.2023.10489389.
- [7]. L. Yadav and A. Ambhaikar, "Approach Towards Development of Portable Multi-Model Tele-Healthcare System," 2023 International Conference on Artificial Intelligence for Innovations in Healthcare Industries (ICAIIHI), Raipur, India, 2023, pp. 1-6, doi: 10.1109/ICAIIHI57871.2023.10489468.
- [8]. Lowlesh Yadav and Asha Ambhaikar, Exploring Portable Multi-Modal Telehealth Solutions: A Development Approach. *International Journal on Recent and Innovation Trends in Computing and Communication (IJRITCC)*, vol. 11, no. 10, pp. 873–879, Mar. 2024.11(10), 873–879.
- [9]. Lowlesh Yadav, Predictive Acknowledgement using TRE System to reduce cost and Bandwidth, March 2019. *International Journal of Research in Electronics and Computer Engineering (IJRECE)*, VOL. 7 ISSUE 1 (JANUARY- MARCH 2019) ISSN: 2393-9028 (PRINT) | ISSN: 2348-2281 (ONLINE).
- [10]. Sandhya.S. Bachar, Neehal.B. Jiwane, Ashish.B. Deharkar "Sentiment analysis of social media" DOI: 10.17148/IJARCCE.2022.111234 *International Journal of Advanced Research in Computer and Communication Engineering* ISO 3297:2007 Certified □ □ Impact Factor 7.918 □ □ Vol. 11, Issue 12, December 2022.
- [11]. Akshay A. Zade, , Lowlesh N. Yadav, Neehal B. Jiwane. "A Review on Voice Browser" DOI: 10.17148/IJARCCE.2022.111238 *International Journal of Advanced Research in Computer and Communication Engineering* ISO 3297:2007 Certified □ □ Impact Factor 7.918 □ □ Vol. 11, Issue 12, December 2022.
- [12]. Omkar K. Khadke, Lowlesh N. Yadav, Neehal B. Jiwane. "Review On Challenges and Issues in Data Mining" DOI: 10.17148/IJARCCE.2022.111149 *International Journal of Advanced Research in Computer and Communication Engineering* ISO 3297:2007 Certified □ □ Impact Factor 7.918 □ □ Vol. 11, Issue 11, November 2022.



- [13]. Miss. Vaishali Vaidya, Mr. Vijay Rakhade, Mr. Neehal B. Jiwane. "VOICE CONTROLLED ROBOTIC CAR BY USING ARDUINO KIT" DOI: 10.17148/IJARCCE.2022.111232 International Journal of Advanced Research in Computer and Communication Engineering ISO 3297:2007 Certified □ □ Impact Factor 7.918 □ □ Vol. 11, Issue 12, December 2022.
- [14]. Atharv Arun Yenurkar , Asst Prof. Neehal B. Jiwane , Asst. Prof. Ashish B. Deharkar. "Effective Validation for Pervasive Computing and Mobile Computing Using MAC Algorithm". International Journal of Research Publication and Reviews, Vol 3, no 12, pp 470-473 December 2022.
- [15]. Pooja Raju Katore, Asst. Prof. Ashish B. Deharkar , Asst. Prof. Neehal B. Jiwane. "Cloud Computing and Cloud Computing Technologies: A-Review". International Journal of Research Publication and Reviews, Vol 3, no 12, pp 538-540 December 2022
- [16]. Combining Vedic & Traditional Mathematic Practices for Enhancing Computational Speed in Day-To-Day Scenarios, Speed in Day-To-Day Scenarios, Conference: Industrial Engineering Journal ISSN: 0970-2555 Website: [www.ivyscientific.org](http://www.ivyscientific.org), At: Industrial Engineering Journal ISSN: 0970-2555 , Website: [www.ivyscientific.org](http://www.ivyscientific.org) (UGC JOURNAL)
- [17]. python.net, December 2022, DOI:10.17148/IJARCCE.2022.111237 , Conference: International Journal of Advanced Research in Computer and Communication Engineering.
- [18]. A Survey for Credit Card Fraud Detection Using Machine Learning ,December 2022, DOI:10.17148/IJARCCE.2022.111221 ,Conference: International Journal of Advanced Research in Computer and Communication Engineering
- [19]. GRB 210217A: a short or a long GRB? ,December 2022 ,DOI: 10.1007/s12036-022-09822, Journal of Astrophysics and Astronomy , Published by Online ISSN: 0973-7758, Print ISSN: 0250-6335.
- [20]. Pronunciation Problems of English Language Learners in India, November 2022 ,DOI: 10.17148/IJARCCE.2022.111151 , Conference: International Journal of Advanced Research in Computer and Communication Engineering.
- [21]. Photometric and spectroscopic analysis of the Type II SN 2020jfo with a short plateau, November 2022 , DOI:10.48550/arXiv.2211.02823 ,License CC BY 4.0.
- [22]. Artificial Neural Network, May 2022 , DOI: 10.17148/IJARCCE.2022.115196 , Conference: International Journal of Advanced Research in Computer and Communication Engineering.
- [23]. Cloud Storage Security Based on Dynamic key Generation Technique ,May 2022 DOI: 10.17148/IJARCCE.2022.115189 , Conference: International Journal of Advanced Research in Computer and Communication Engineering
- [24]. Research on Techniques for Resolving Big Data Issues ,May 2022,DOI: 10.17148/IJARCCE.2022.115192 ,Conference: International Journal of Advanced Research in Computer and Communication Engineering
- [25]. STUDY on INTERNET of THINGS BASED APPLICATION ,May 2022 , DOI: 10.17148/IJARCCE.2022.115179 , Conference: International Journal of Advanced Research in Computer and Communication Engineering.
- [26]. Research on Data Mining, May 2022 , DOI: 10.17148/IJARCCE.2022.115176, Conference: International Journal of Advanced Research in Computer and Communication Engineering.
- [27]. Security Solution of The Atm and Banking System, May 2022 ,DOI: 10.17148/IJARCCE.2022.115165 ,Conference: International Journal of Advanced Research in Computer and Communication Engineering.
- [28]. Study on Positive and Negative Effects of Social Media on Society , May 2022 , DOI: 10.17148/IJARCCE.2022.115161 ,Conference: International Journal of Advanced Research in Computer and Communication Engineering.
- [29]. Research on Association Rule Mining Algorithms , May 2022 , DOI: 10.17148/IJARCCE.2022.115152 ,Conference: International Journal of Advanced Research in Computer and Communication Engineering.
- [30]. Block chain Technology , May 2022 ,DOI: 10.17148/IJARCCE.2022.115154 Conference: International Journal of Advanced Research in Computer and Communication Engineering.



- [31]. INTERNET of THINGS RESEARCH CHALLENGES and FUTURE SCOPE , May 2022 DOI: 10.17148/IJARCCE.2022.115150 , Conference: International Journal of Advanced Research in Computer and Communication Engineering.
- [32]. Data Collection and Analysis in a Smart Home Automation System , May 2022 DOI: 10.17148/IJARCCE.2022.115148 ,Conference: International Journal of Advanced Research in Computer and Communication Engineering.
- [33]. Using Encryption Algorithms in Cloud Computing for Data Security and Privacy , May 2022 , DOI:10.17148/IJARCCE.2022.115149 , Conference: International Journal of Advanced Research in Computer and Communication Engineering.
- [34]. An Efficient Way to Detect the Duplicate Data in Cloud by using TRE Mechanism , May 2022 ,DOI:10.17148/IJARCCE.2022.115139 ,Conference: International Journal of Advanced Research in Computer and Communication Engineering , Volume: 11.

