

Lyceum Hub with Cloud Application Development

Ponnarasi S¹, Adhithiyam D², Arunmani K³, Manikandan B⁴

Assistant Professor, Department of Information Technology¹

Students, B.Tech, Final Year, Department of Information Technology^{2,3,4}

Anjalai Ammal Mahalingam Engineering College, Thiruvarur, India

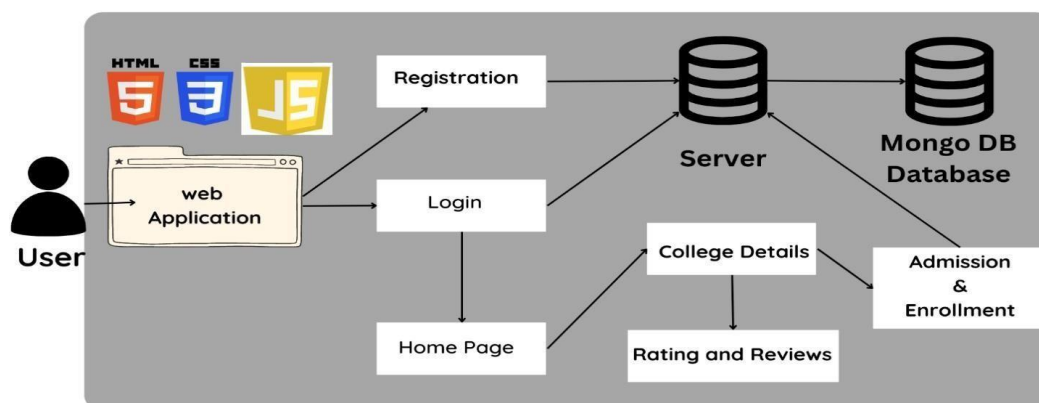
Abstract: The Lyceum Hub with Cloud Application development project is a comprehensive platform designed to simplify the college search process for students and their families. The platform aims to provide a centralized and user-friendly interface for searching and comparing colleges based on a variety of criteria, including location, cost, program offerings, and campus life with map discovery function. It also facilitates with Q'n'A section, reviews & ratings, and Admission enrolment with payment integration to the user. With its advanced search and filtering capabilities, In this project helps students make informed decisions about which colleges to apply to, by providing them with accurate, up-to-date information about each college. Additionally, the platform offers a way for users to save their favorite colleges, receive notifications about important dates, and engage with college representatives. For students and families as they navigate the college selection process and helps to ensure that students find the right fit for their academic and personal goals..

Keywords: Map Discovery, Reviews and Ratings, Question Section, up to-date Information

I. INTRODUCTION

College Finder web application is an online platform that assists students in finding the right college based on their preferences and requirements. This platform is designed to simplify the college search process for students, allowing them to easily access information about different colleges and universities in one place. With the College Finder web application, students can search for colleges based on various factors such as location, program offerings, cost, and campus life. This comprehensive search feature makes it easier for students to compare and contrast different colleges, enabling them to make informed decisions about which colleges to apply to. The web application also offers additional features such as a Q&A section, reviews and ratings, and admission enrolment, which allows students to engage with other users and college representatives. These features provide users with a personalized and interactive experience, helping them gain a deeper understanding of the colleges they are considering. Overall, College Finder web application is a valuable resource for students who are navigating the college selection process. It provides students with accurate and up-to-date information about colleges, making it easier for them to find the right fit for their academic and personal goals. The platform is user-friendly and accessible, ensuring that students can use it easily and efficiently.

II. SYSTEM ARCHITECTURE



The college finder web application typically consists of several layers that work together to provide users with a seamless and efficient experience.

The front-end layer is responsible for the user interface, where users interact with the platform. This layer includes the web pages, graphical user interface, and the application's overall look and feel.

The back-end layer is responsible for the server-side logic that supports the web application. This layer is responsible for handling requests from the front-end layer, processing the requests, and returning the appropriate responses. The back-end layer usually consists of a web server, an application server, and a database server.

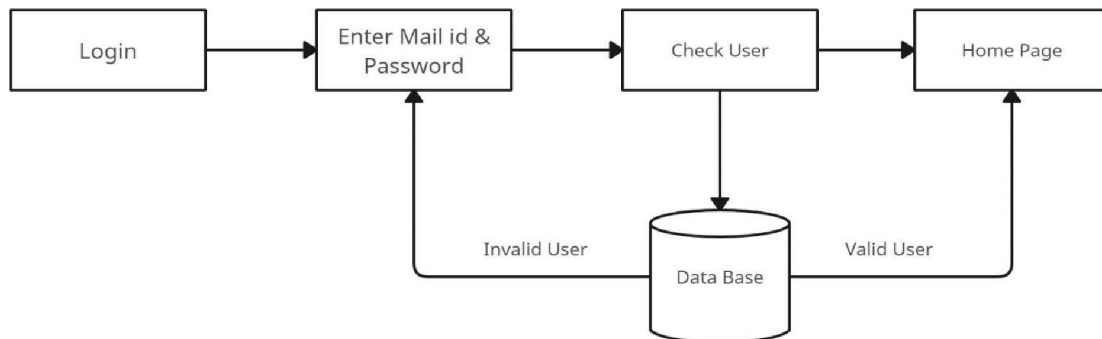
The web server is responsible for receiving incoming requests and returning the appropriate responses. The application server processes the requests, executes the appropriate logic, and communicates with the database server to retrieve or store data. The database server stores and manages the application's data, such as user profiles, college information, and user-generated content.

In addition to the front-end and back-end layers, a college finder web application may also include additional layers, such as security and analytics. The security layer is responsible for protecting the application from various security threats, such as cyber-attacks and data breaches. The analytics layer is responsible for tracking and analyzing user behavior, which can be used to improve the application's performance and user experience.

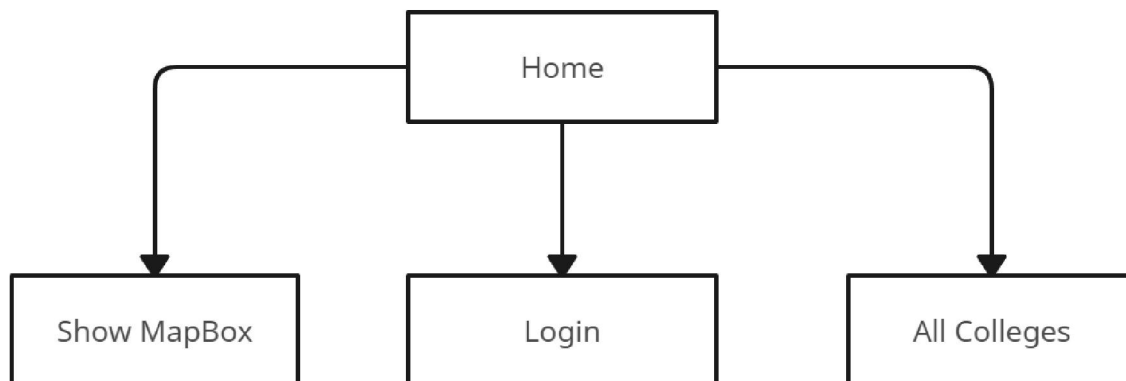
Overall, the system architecture of a college finder web application is designed to provide a robust, secure, and efficient platform that users can rely on to make informed decisions about their college education. By utilizing a multi-layered architecture, college finder web applications can provide a seamless and user-friendly experience to users while ensuring the security and reliability of the application.

III. LIST OF MODULES

Login Module: Login module is segregated into two, Student Login and Admin Login. In Admin Login, university or college's administrator will have the access to log in to this section using username and password. In Student Login, the student or user can log in using username and the password individually.



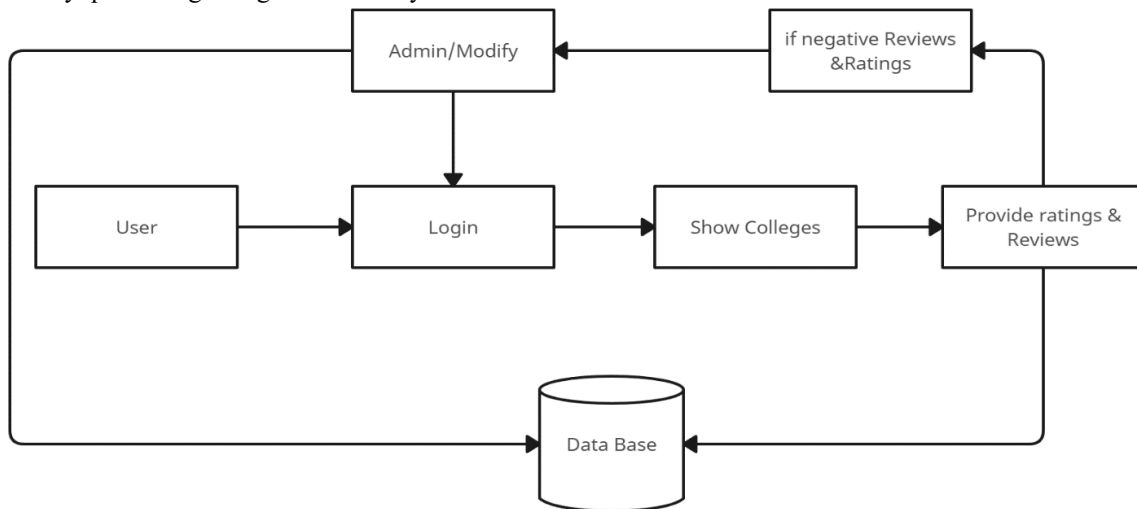
Home Page Module: Home Page Module facilitates the user by locating the college location on the map with search facility. Once a user logs into the app, they can browse through the list of gas stations available in their area. They can also filter the search results based on their preferred price range, and other factors.



College List Module: College List module consists of the list of affiliated colleges, where the students can surf and select their preferred one.

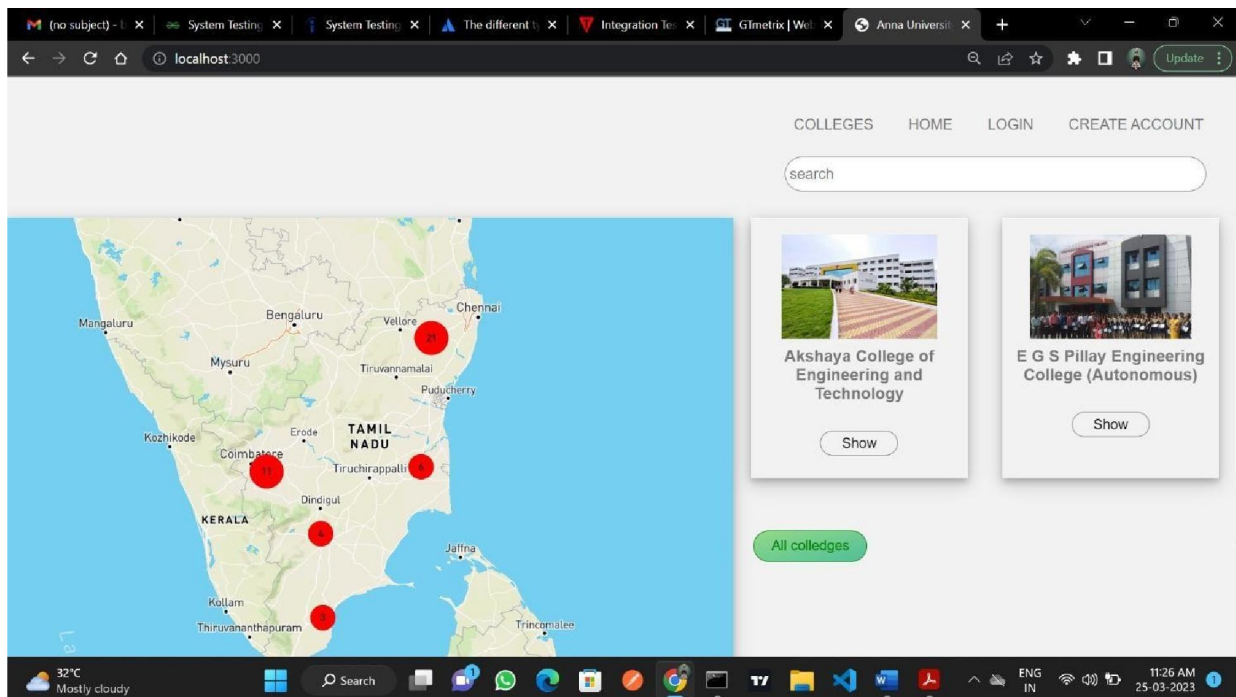
College Profile Module: College Profile module consists of brief information about the particular college like, description, departments, faculty, area, amenities, etc.

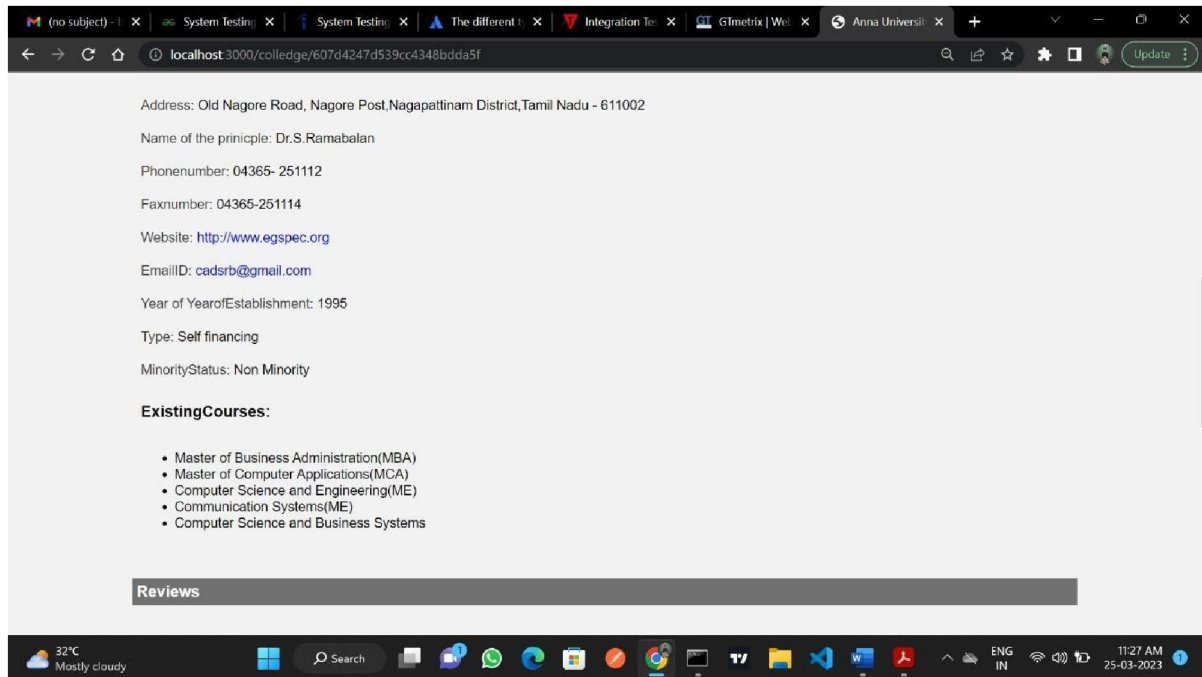
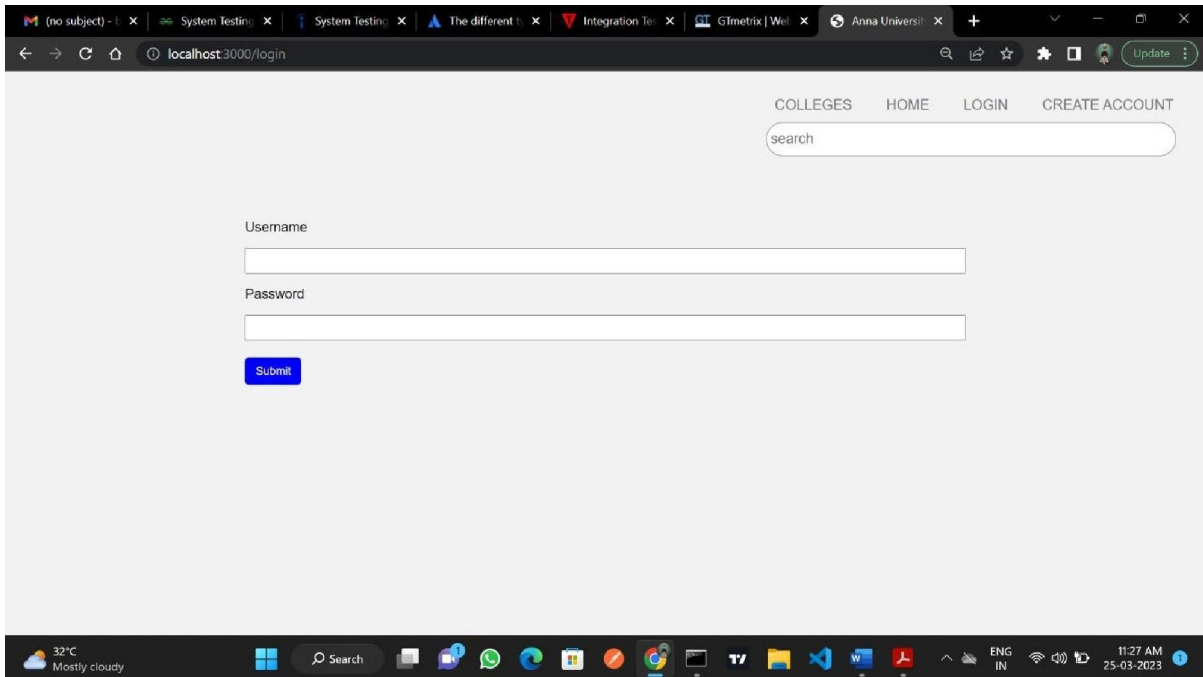
Review's and Q'n'A Module: This module facilitates the user to post review about any college and ask questions related to any queries regarding the university.

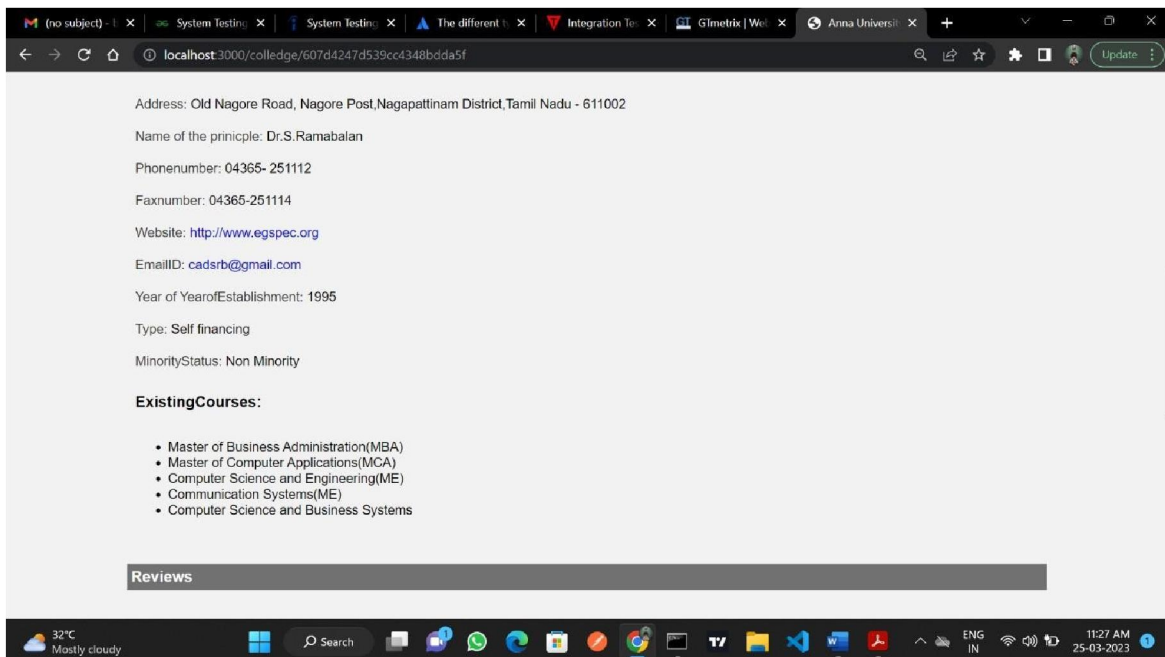
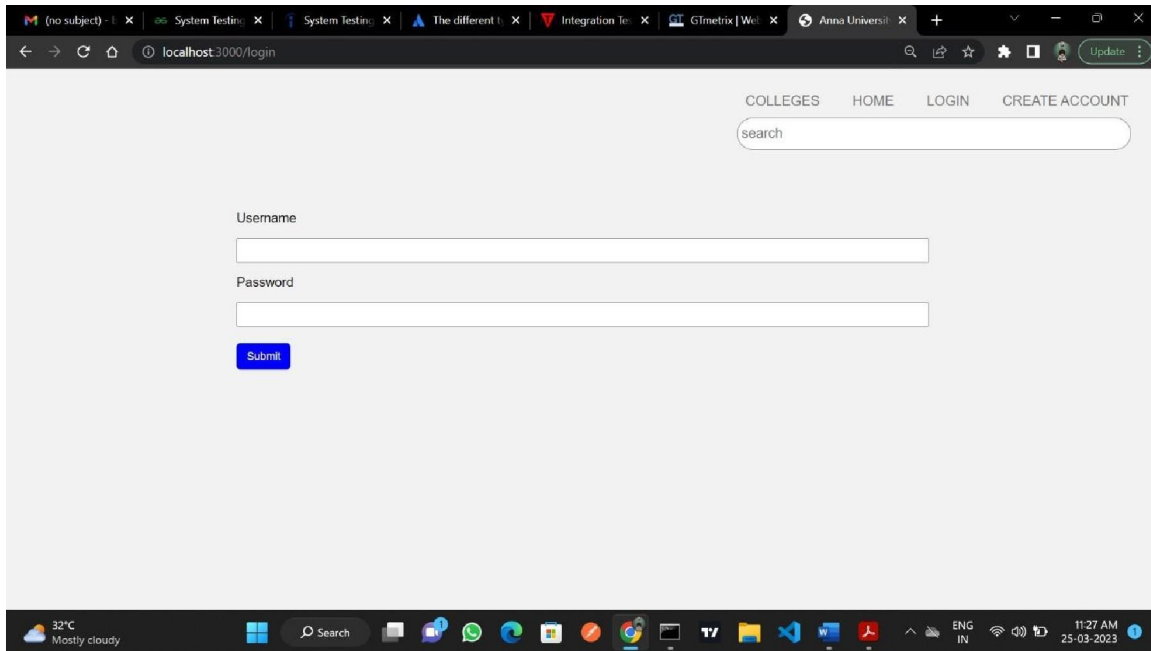


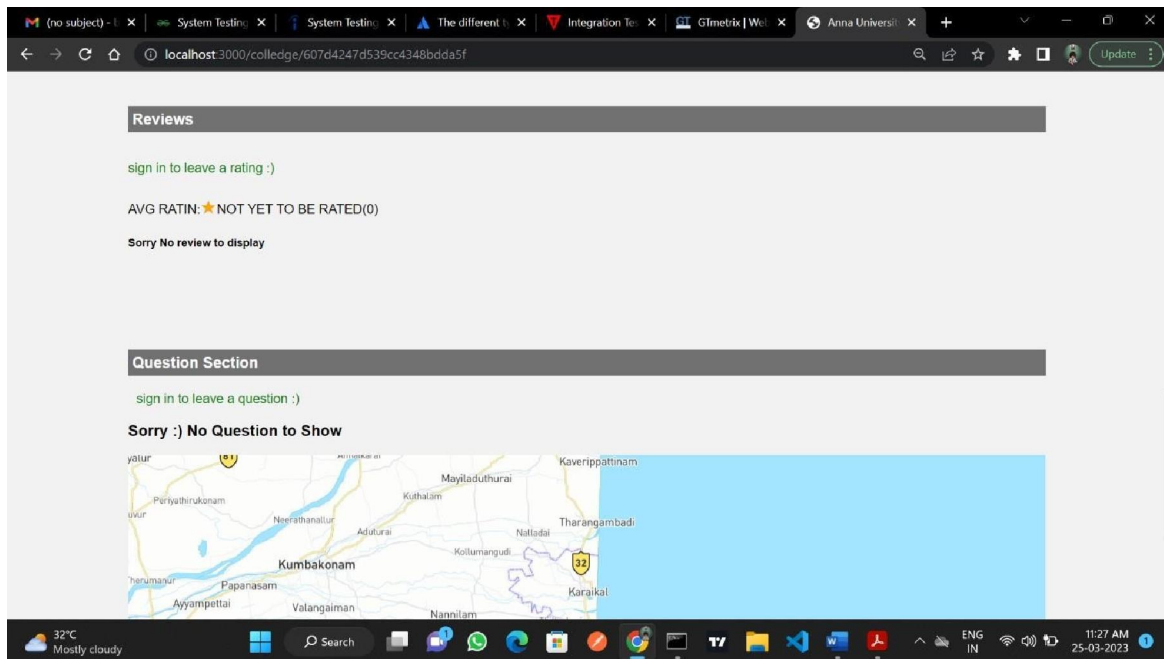
Admission Enrolment and Payment Module: This module facilitates the student to proceed with the admission process at preferred university or college in online mode (Admission fee can be paid using online transaction, if applicable)

IV. SCREEN SHOT









V. FUTURE ENHANCEMENT

Integration with career services: The platform can be enhanced by adding a feature that connects students with career services, providing them with guidance on career paths and job opportunities after graduation.

Enhanced Social Features: The platform can be improved by enhancing its social features, enabling users to connect with peers, alumni, and college representatives, providing them with a more interactive and personalized experience.

Integration with Scholarship and Financial Aid resources: The application can be enhanced by providing users with information about scholarship and financial aid opportunities, assisting them in funding their education.

Virtual Mentorship Program: The platform can be improved by offering a virtual mentorship program, pairing students with experienced mentors who can provide guidance and support throughout their academic journey

VI. CONCLUSION

In conclusion, the college finder web application is an essential tool for students and their families, assisting them in making informed decisions about which colleges to apply to. users to search and compare colleges based on various criteria, such as location, program offerings, cost, and campus life.

The project provides additional features such as a Q&A section, reviews and ratings, and admission enrollment, which enhance the user experience and provide valuable information to users. The college finder web application ensures that students find the right fit for their academic and personal goals.

The system architecture of the college finder web application is designed to provide a seamless and efficient experience to users, with multiple layers such as front-end, back-end, security, and analytics. The platform can be further enhanced with future enhancements such as virtual campus tours, personalized recommendations, and social features, providing an even more comprehensive and personalized experience to users.

Overall, the college finder web application is a valuable resource for students and their families, simplifying the college search process and ensuring that students find the right college for their academic and personal goals.

REFERENCES

- [1]. College Finder & Recommender Web Application System by Nishank Samant, Nikhil Manjarekar, Ashwini Mhavarkar, Ashutosh Nagaonkar, Prof. Medha Kulkarni March 2017
- [2]. Towards an Easy-to-Use Web Application Server and Cloud PaaS for Web Development Education by Philipp Brune, Michael Leisner, Erica Jank April 2014

- [3]. Cloud and Multi-Cloud Computing: Current Challenges and Future Applications by Danilo Ardagna March 2015
- [4]. The Application of Cloud Computing in Education Informatization by Bo Wang,HongYu Xing June 2011
- [5]. Multi-Port Shared Cloud Framework of College Student Education Management Information System under the Background of Micro -Data Dynamic Network by Xiaolin zhao November 2022
- [6]. Web Service Integrated Cloud Computing Management Information System Fei Liu,Fengjie Hao March 2015

BIOGRAPHY



Mrs. S. Ponnarasi M.E., Assistant Professor, Department of Information Technology, 08 Years of Experience , Anjalai Ammal Mahalingam Engineering College, Kovilvenni, Thiruvarur-614 403



Mr. D. Adhithyan, Pursuing B.Tech – Information Technology (IT) Final Year in Anjalai Ammal Mahalingam Engineering College, Kovilvenni, Thiruvarur-614 403



Mr. K. Arunmani, Pursuing B.Tech – Information Technology (IT) Final Year in Anjalai Ammal Mahalingam Engineering College, Kovilvenni, Thiruvarur-614 403



Mr. B. Manikandan, Pursuing B.Tech – Information Technology (IT) Final Year in Anjalai Ammal Mahalingam Engineering College, Kovilvenni, Thiruvarur-614 403